

ESSENCE OF *The South Pacific*



Avanti[®]
Destinations



Contents

<i>Australia</i>	<i>08</i>	<i>New Zealand</i>	<i>36</i>	<i>Fiji</i>	<i>64</i>
VACATION PACKAGES	10	VACATION PACKAGES	38	VACATION PACKAGES	66
SYDNEY	12	AUCKLAND	40	DENARAU	68
MELBOURNE	16	ROTORUA	44	CORAL COAST	70
ADELAIDE	20	HAWKE'S BAY	48	VITI LEVU	72
HOBART	22	CHRISTCHURCH	50	MAMANUCA	74
BRISBANE	24	FRANZ JOSEF	54	YASAWA ISLANDS	76
WHITSUNDAY/HAMILTON	26	FOX GLACIER	56	SAVUSAVU	78
GBR: CAIRNS	28	QUEENSTOWN	58		
GBR: PORT DOUGLAS	30	TEKAPO & MOUNT COOK	62		
ULURU (AYERS ROCK)	32				
PERTH	36				

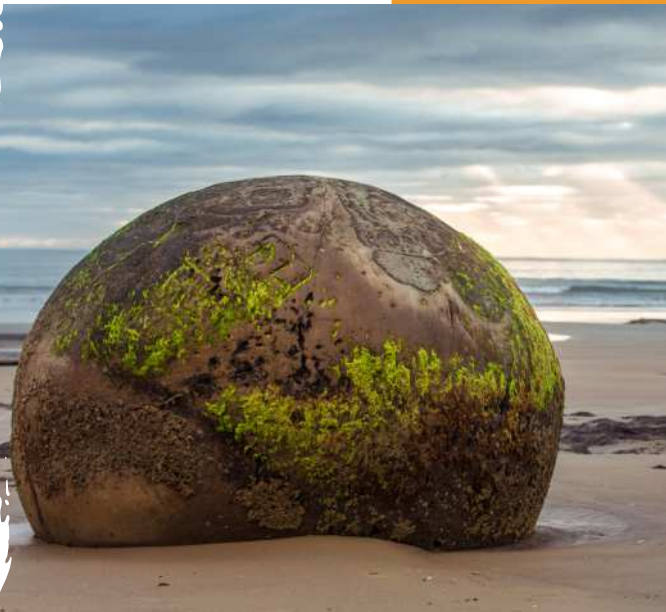
South Pacific

Australia, New Zealand, and Fiji — three spectacular destinations brimming with undeniable allure, distinct South Pacific charm, fascinating history and culture, and breathtaking natural beauty.

The fusion of **Australia's** world-famous cities, diverse geography and wildlife, and rich Aboriginal history makes the 'Land Down Under' truly inimitable. Destinations like Sydney and Melbourne effortlessly captivates visitors with cosmopolitan offerings while the sprawling Outback defines the continent's rugged and noble soul. Then you have one-of-a-kind icons like the Great Barrier Reef that showcase how incredible Australia's natural wonders truly are — special places that must be seen and experienced in real life. From the world-famous Sydney Opera House to the enigmatic Uluru-Kata Tjuta National Park, Australia delivers contrasting yet equally memorable experiences.

New Zealand is world-renowned for its status as the birthplace of extreme adventures, for its tendency to have four seasons in one day, and for its scene-stealing role as the cinematic backdrop of Peter Jackson's 'Lord of the Rings' and 'The Hobbit' trilogies — rightfully so, because the country is stunningly gorgeous. Fiordland National Park's Milford Sound boasts sheer cliffs and waterfalls, while Rotorua shines with its fascinating Māori culture and geothermal attractions. Cities like Auckland and Wellington blend urban sophistication with a sincere laid-back vibe. Aotearoa, the Māori-language name for New Zealand, is a veritable land of captivating culture and jaw-dropping vistas.

Comprised of over 330 picture-perfect islands, the **Fijian** archipelago is paradise incarnate for leisure travelers, beach lovers, adventure seekers, and everything in between. This is an idyllic place where friendly locals greet you with a warm "Bula!" as you travel and hop across the many paradisiacal island destinations and attractions sprinkled throughout the country. Regardless of your intent — whether it's to do adventurous activities like exploring some of the best coral reefs in the Pacific or simply soak up some sunshine with your feet in the sand and a cold beverage in hand — Fiji is guaranteed to play its part in making your vacation unforgettable.





Australia

Fiji

New Zealand

TRANSPORTATION

There is much to explore in the South Pacific, but finding your way across the vast outback of Australia or hopping from island to island in Fiji can feel overwhelming to schedule. However, the region's wonderfully diverse range of transportation options make for seamless connections across its diverse landscapes.

In Australia, a well-connected network of buses, trains, and ferries makes exploring major cities a breeze, while travelling from coast-to-coast is also quite manageable with domestic cross-country flights averaging around 4 hours. For a more scenic journey, travelers can hop aboard the iconic Indian Pacific or Ghan trains for unforgettable multi-day trips through the heart of the continent.

New Zealand's transportation network is equally impressive, with efficient bus services connecting towns and cities across both its North and South Islands. In many parts of the country the trip itself is often a highlight of the experience, with scenic travel options like the TranzAlpine train, Interisland ferry, or even a rental car for gorgeous drives across the country.

In Fiji, transport takes on a unique charm with ferries, catamarans, and speedboats providing access to many of the idyllic islands that make up the country – like the white sandy shores of Yasawa. Domestic flights are also available to whisk travelers between the islands and provide breathtaking aerial views – but keep in mind there are baggage limitations on these smaller flights.

Lake Wakatipu, Queenstown



Australia

TRAVEL TIMES BY AIR TO SYDNEY, MELBOURNE & BRISBANE FROM:

Honolulu	11 Hours
Los Angeles	15 Hours
Houston	19 Hours
Chicago	20 Hours
New York	22 Hours

New Zealand

TRAVEL TIMES BY AIR TO AUCKLAND FROM:

Honolulu	9 Hours
Los Angeles	13 Hours
Houston	14.5 Hours
Chicago	16.5 Hours
New York	17.5 Hours

Fiji

TRAVEL TIMES BY AIR TO NADI FROM:

Honolulu	7 Hours
Los Angeles	11 Hours
Houston	16.5 Hours
Chicago	17.5 Hours
New York	18.5 Hours

Events & Festivals

Adelaide Festival of Arts

– *Australia*

1ST to 17TH OF MARCH

Celebrate over 60 years of creativity, innovation, and Australian cultural expression at the annual Adelaide Festivals of Arts. Join thousands of others and watch as Adelaide transforms into a hub for showcasing theater, dances, music, visual arts, and historical literature.

Matariki Festival

– *New Zealand*

11TH to 22ND OF JULY

Celebrated across many New Zealand indigenous communities, the Matariki Festival marks the special tradition of bringing in the Māori new year. As the stars align in the night sky of Auckland, the ceremonies commence as locals begin storytelling, performing arts, and celebrating their heritage.

Hibiscus festival

– *Fiji*

DATE TBD YEARLY: JULY OR AUGUST

Join in on Fiji's longest running celebration, dating all the way back to 1956. Every August the island of Viti Levu comes together for a week filled with traditional music, dancing, and authentic Fijian cuisine. The festival commences with the crowning of the "Hibiscus Queen", who is announced the most beautiful.

The Outback Festival

– *Australia*

19TH - 23RD OF SEPTEMBER

Nestled in the heart of Queensland's Outback, this festival demonstrates the authentic resilience of Australians. From Iron Man challenges where participants prove their strength and skill to slower activities like bush poetry, the Outback Festival showcases the essence of the Australian way of life.

Arrowtown Autumn Festival

– *New Zealand*

25TH - 28TH OF APRIL

Held amidst the stunning landscapes of the South Island and just 20 minutes from Queenstown, this event holds deep roots in the local community and is a true reflection of the local culture. Watch the leaves change into vibrant colors and enjoy events such as parades, workshops, and native tree planting.

Bula festival

– *Fiji*

DATE TBD YEARLY: AUGUST

Get a true Bula welcome at the festival that showcases all of Fiji's culture and warm hospitality. The city of Nadi, on the western side of Viti Levu, gather from near and far to share traditional foods, lively music, and other entertainment such as parades. Join the locals as they show off what Fiji is all about!



Australia

“ From picture-perfect beach getaways to adrenaline-pumping Outback adventures, Australia has a vacation for everyone. ”

Welcome to the diverse continent of Australia, globally beloved for its rare wildlife, majestic Outback, teeming coral reefs, colorful cities, unique foods, and full-bodied smokey wines. With a contrasting range of climates – from its idyllic tropical beaches to its snow-capped Alps and its untouched deserts – Australia offers a plethora of year-round opportunities to explore its outdoors.

Whether looking to relax on the beach, traverse a rugged terrain, encounter authentic indigenous communities, become absorbed in the arts and culture of its cities, or encounter some of the world's most precious and fascinating rainforests and underwater treasures, Australia is a welcoming vacation hotspot chock-full of adventures and activities for every type of traveler.



Blue Mountains National Park



Jaw-dropping beauty & lively cities – Australia may sound familiar but it's truly unlike anywhere else on Earth.



City Beach, Perth

SEASONALITY

Australia alone experiences six varying climate groups – from the tropical conditions of Northern Queensland to the arid deserts of the Outback and the temperate coastal conditions of its capital, Sydney. September to November and March to May are considered the best times to visit Australia due to its milder weather, though there are bountiful options for visiting in the calmer travel seasons, such as the year-round destination of Port Douglas.

Australia ESSENTIALS

SYDNEY, ULURU, CAIRNS/
PORT DOUGLAS

10 Days / 9 Nights

Delve into Australia's most essential offerings, from its stunning coastal capital to its rugged desert Outback and its awe-striking coral reef system. Tour the famed Sydney Opera House, explore Blue Mountains National Park, watch the sun rise over the sacred Uluru, appreciate Aboriginal art and history, snorkel the waters of the Great Barrier Reef, and wander the World Heritage rainforests of Daintree.

LET'S GO!



Uluru, Ayers Rock



Explore the most renowned sites of Australia through a 16-day itinerary, revealing the nation's extraordinary natural marvels. Witness the dynamic cityscape of Sydney, taste the world-famous wine of Adelaide, experience the untamed landscapes of Kangaroo Island, immerse in Melbourne's stunning architecture, encounter the rugged majesty of Uluru, and bask in the tropical splendor of Port Douglas.

LET'S GO!

Australia DISCOVERY

SYDNEY, ADELAIDE,
KANGAROO ISLAND,
MELBOURNE, ULURU AND PORT
DOUGLAS

16 Days / 15 Nights

Sydney

“ A shimmering skyline nestled among the shores of New South Wales. ”



Australia's iconic city where natural wonders harmonize with urban spectacles, Sydney has grown into one of the leading international hubs for culture, commerce, and of course — travel.

With its shimmering skyline nestled along the shores of New South Wales, Sydney's charm shines through its sparkling harbor, beaches, legendary landmarks, and diverse coastal communities.

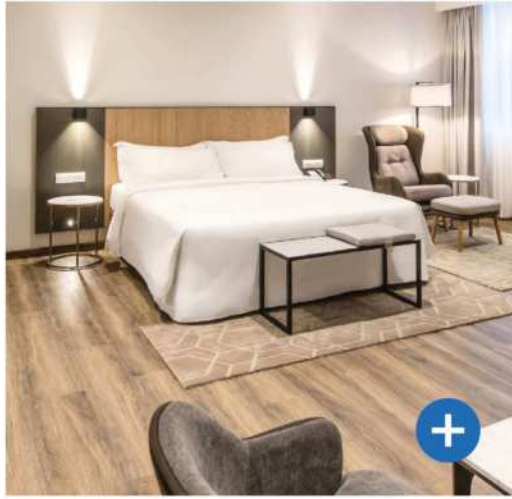
Dive into a dynamic cityscape offering world-class dining, shopping, and cultural experiences. From the golden sands of Bondi Beach to the lush Royal Botanic Garden, and a plethora of vibrant markets and historic neighborhoods in between, this gateway into The Lucky Country boasts the perfect blend of rich history, breathtaking landscapes, and boundless adventures.

TRAVEL TIMES FROM SYDNEY BY AIR TO:

Melbourne	1.5 Hours
Adelaide	2 Hours
Hobart	1.75 Hours
Brisbane	1.5 Hours
Cairns	3 Hours
Uluru (Ayers Rock)	3.5 Hours
Perth	4 Hours

ADDITIONAL FEATURED HOTELS

QT Bondi 4.5*, Four Seasons Hotel Sydney 5*

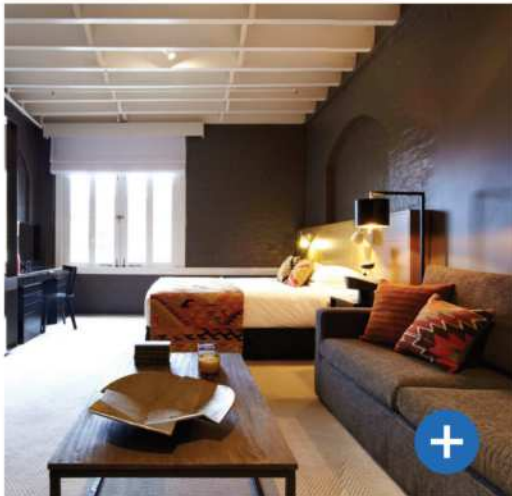


Grace Hotel Sydney 4*

Transport back to the 1920's at Grace Hotel, a wonderfully restored neo-Gothic gem with the classic Art Deco interiors of the 20th Century. Located in Sydney's central business district, it's a short stroll to landmarks like Sydney Tower Eye and Hyde Park, with a range of amenities from a rooftop fitness center to a lobby breakfast.

FEATURES

Restaurant | Bar | Pool | AC | Elevator | Parking | Breakfast
Family Friendly

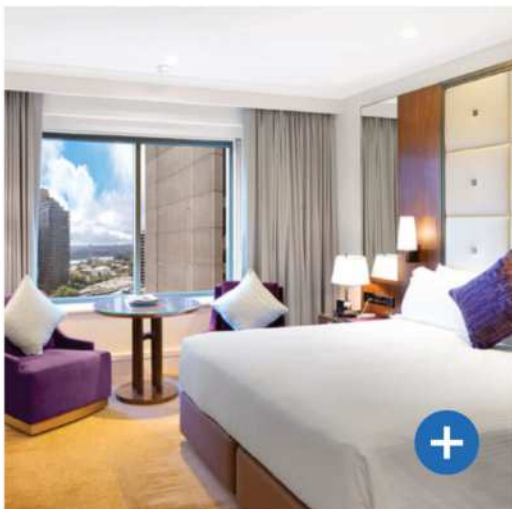


Harbour Rocks Hotel Sydney 4*

Uncover Sydney's historical charm at Harbour Rocks MGallery. Nestled in the heart of the city's famed Circular Quay, this boutique hotel blends modern amenities with décor and an age-old structure from Sydney's captivating past. Explore the city's famed harbor, Opera House, and the vibrant Rocks precinct right from your doorstep.

FEATURES

Restaurant | Bar | Romance | AC | Breakfast

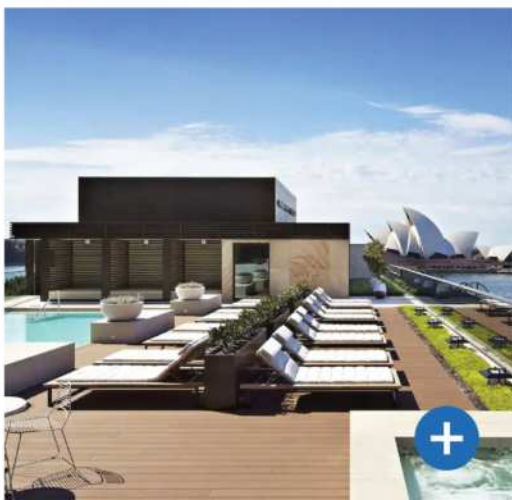


Amora Jamison 4.5*

A chic 5-star oasis centrally located in Sydney's bustling business district, Amora Jamison is an urban haven minutes from Wynyard Train Station and other popular attractions. Enjoy top-notch amenities after a day exploring the city like its modern farm-to-table restaurant, cutting-edge spa, and rejuvenating heated pool.

FEATURES

Restaurant | Bar | Pool | Romance | AC | Elevator | Parking
Breakfast



Park Hyatt Sydney 5*

Placed just across the water from the Sydney Opera House with unparalleled views of its famous profile, Park Hyatt Sydney epitomizes luxury, comfort, and convenience right in the harbor. With over 150 spacious rooms, a 24-hour butler service, a rooftop spa and pool, and exquisite dining options, it offers premier accommodations for an exceptional Sydney experience.

FEATURES

Restaurant | Bar | Pool | Romance | AC | Elevator | Parking
Breakfast



Morning Panoramic Sydney

4 HOUR SMALL GROUP TOUR 

Capture the essence of Sydney on this exciting half-day tour through the city's most famous sights. Explore the historic Rocks area, admire the Opera House, catch stunning views of the Harbour Bridge, and experience the New South Wales capital's countless charms before reaching the famous Bondi Beach for an afternoon beverage.



Sydney Opera House and Dine at Opera Bar

2 HOUR TOUR 

Plunge beneath the distinctive shelled façade of the Sydney Opera House and see what goes on behind the scenes at the iconic Australian venue. Learn of its creative history, marvel at its cutting-edge architecture, and explore its many theaters and performance spaces before taking lunch over the beautiful harbor at its Opera Bar.



Secret Sydney Lunch Cruise

4 HOUR TOUR 

Take to Sydney's sparkling harbor for an aquatic adventure, capturing legendary landmarks like the Harbour Bridge and Opera House from the water. Cruise past mansions and national parks, spot some of the local sea life, and explore around the city's attractions after a tasty yacht club lunch at the premier CYCA.



Sydney Harbour Day Climb After Dawn

3.5 HOUR TOUR 

Experience the ultimate Sydney adventure — scaling the iconic Sydney Harbour Bridge for a 360-degree panorama of the city. Start from the Climb Base below the highway and navigate along the bridge's many catwalks, ladders, and arches — reaching the 440-foot summit for an unforgettable vista.



Blue Mountain Deluxe Experience

10 HOUR SMALL GROUP TOUR 

Discover the enchanting Blue Mountains National Park, a UNESCO World Heritage wonderland just hours from Sydney. With an expert guide, see the park's iconic attractions like the 3 Sisters, wallabies, and kangaroos of Calmsley Hill before venturing into some of the park's more remote lookouts and breathtaking sandstone vistas.



Explore the laneways, shop at the markets, visit the museums or cheer on the sports teams!



Melbourne

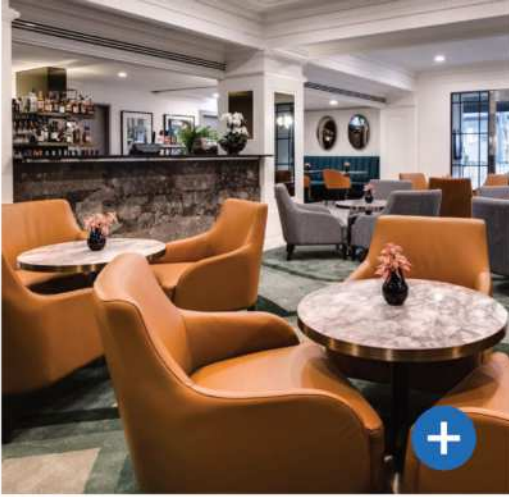
Home to over 5 million people located on the southeastern coast, Melbourne, Australia has a reputation for its vibrancy, cosmopolitan living, deep cultural history, lush green gardens, and the arts. The city boasts color and street murals, adding a modern flair to the city's character. With its impressive parks, the Yarra River winding through, and a blend of Victorian-era architecture and futuristic skyscrapers, Melbourne captivates travelers with its unique combination of creativity, vitality, and magnetism. This metropolis also has all four seasons – making it a destination for all desired weather. Check out why Melbourne has been awarded for both Happiest City in the World and one of the World's Most Livable Cities.

TRAVEL TIMES FROM MELBOURNE BY AIR TO:

Sydney	1.5 Hours
Hobart	1.5 Hours
Adelaide	1 Hour
Cairns	3.5 Hours
Brisbane	2 Hours
Uluru (Ayers Rock)	3 Hours
Perth	4 Hours

ADDITIONAL FEATURED HOTELS

Clarion Suites 4*, The Jazz Corner Hotel 4.5*



*The Savoy Hotel on Little Collins 4**

In the heart of Melbourne is a sanctuary for travelers looking for local and contemporary charm. This Victorian boutique hotel offers a prime location for exploring the city's iconic attractions, vibrant restaurants, and cultural landmarks.

FEATURES

Restaurant | Bar | Romance | AC | Elevator | Parking | Breakfast

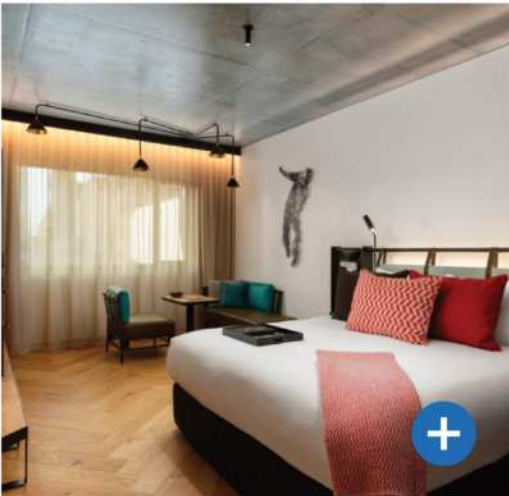


*Ovolo Laneways Hotel 4.5**

The Ovolo Laneways Hotel challenges the idea of basic hotels, filling its property with creative art-filled décor with 43 uniquely designed rooms. This electric city-center hotel offers a colorful and upbeat stay where its visitors can sip and enjoy all Melbourne has to offer.

FEATURES

AC | Elevator | Parking | Breakfast

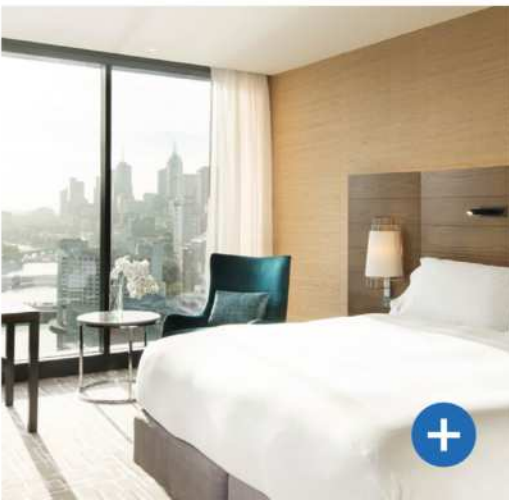


*QT Melbourne 4.5**

Situated in Melbourne's CBD, the QT Melbourne stands as a chic and modern boutique hotel. This property is audacious for its diverse design in art and culture and is conveniently located near attractions such as the Regent Theatre, St. Paul's Cathedral, and the famous Bourke Street.

FEATURES

Restaurant | Bar | Romance | AC | Elevator | Parking | Breakfast



*Pan Pacific Melbourne 5**

Kick back and relax at this 5-star luxury property situated along the renowned Yarra River in the South Wharf precinct. With its floor-to-ceiling windows, award-winning restaurant, café and bar, The Pan Pacific Melbourne has the on-site convenience travelers will love taking advantage of.

FEATURES

Restaurant | Bar | Romance | Family Friendly | AC | Elevator
Parking | Breakfast



Melbourne City Morning

3 HOUR SMALL GROUP TOUR +

Melbourne is known for its vibrant energy, art, fashion, and cuisine. Walk alongside a knowledgeable guide who will reveal Melbourne’s old-world charm and history. Visit iconic sights such as the MCG, the world-famous sports precinct, and St. Patrick’s Cathedral.



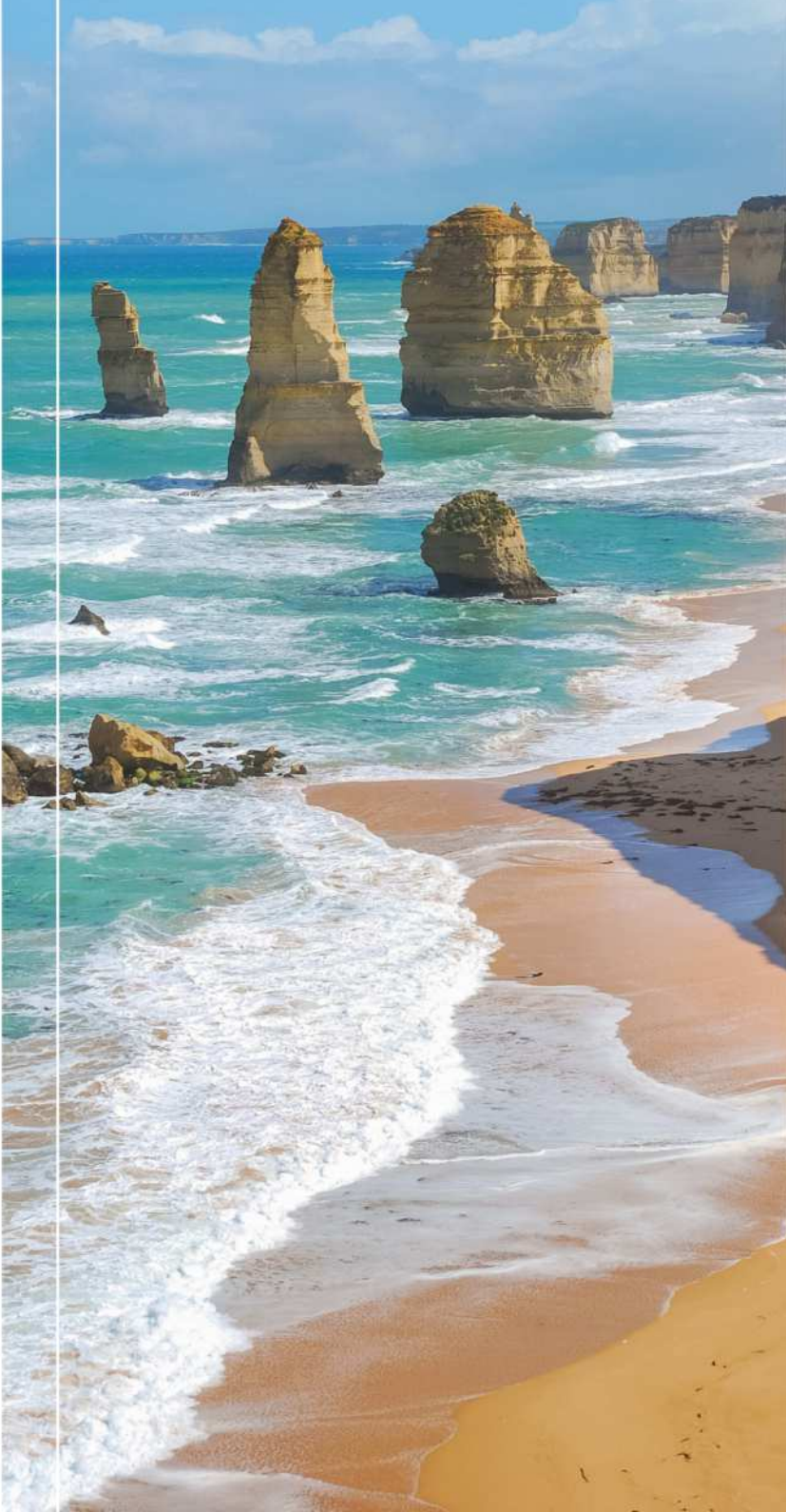
Lanes and Arcades with Lunch

4 HOUR SMALL GROUP TOUR +

Stray away from the crowds and let the locals showcase some of Melbourne’s hippest cafes, vibrant backstreets, the quirkiest restaurants and more! Indulge in a bistro-like lunch alongside a glass of wine and listen to all the local historical tales that linger through the streets.



Experience one of Australia's spectacular coastlines. Visit the renowned Twelve Apostles.



Great Ocean Road and Twelve Apostles

10.5 HOUR TOUR 

Experience one of Australia's most spectacular coastlines – The Great Ocean Road! Enjoy panoramic views along the southern edge of Victoria and pay a visit to the iconic formation of the Twelve Apostles, a breathtaking series of limestone stacks that tower along the shoreline.



Phillip Island - Nature Wildlife with Penguin Underground Viewing

10 HOUR TOUR 

Only 90 minutes out of Melbourne is Phillip Island, a paradise lined with white beaches and stunning wildlife. Watch the penguins from below in their unique underground habitat. Explore the island's biodiverse nature parks and see joey's crawling in the treetops.



Adelaide

“ A great base for exploring South Australia's wine country with many famous wine regions within distance. ”

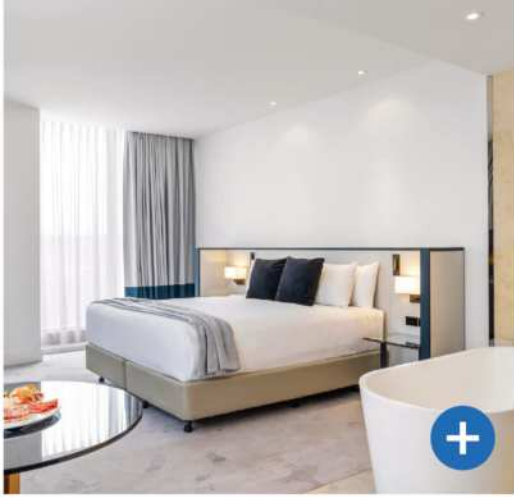
Tucked alongside a dazzling cove on the St Vincent Gulf in South Australia, the charming city of Adelaide is perfectly positioned between the scenery of soft distant hills and the beautiful aquamarine sea. Though smaller than the bustling metropolises of Sydney and Melbourne, Adelaide remains one of the most vibrant and exciting cities of the nation, with diverse communities and cultures, notable historic landmarks, a flourishing arts scene, and exquisite dining options with exceptional regional wines.

TRAVEL TIMES FROM ADELAIDE BY AIR TO:

Sydney	3.5 Hours
Melbourne	3.25 Hours
Brisbane	4.25 Hours
Hobart	3.75 Hours
Cairns	5.5 Hours
Uluru (Ayers Rock)	7 Hours
Perth	5.25 Hours

ADDITIONAL HOTELS

Chancellor Adelaide on Currie 4*

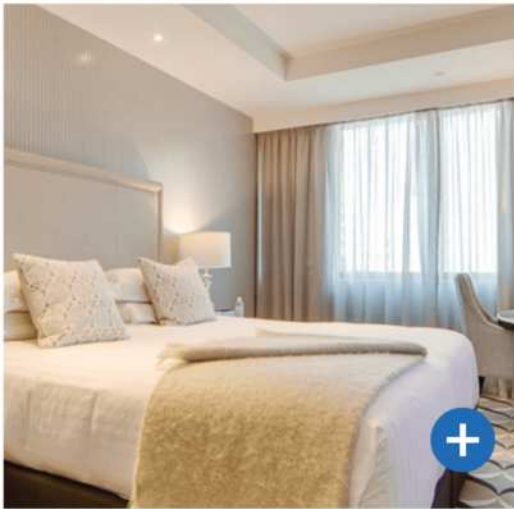


Peppers Waymouth 4.5*

Located in the heart of Adelaide near a series of shops, parks, and attractions including the Central Market and Botanic Garden, this elegant property exudes luxurious accommodations, from marble bathroom tiling to deluxe fixtures. Soak in the heated indoor pool and sauna, and savor Italian fare at Tutto Cucina & Bar.

FEATURES

Restaurant | Bar | Pool | AC | Elevator | Parking | Breakfast



Mayfair Hotel 5*

Housed in an iconic building with a detailed heritage façade, this Art Deco boutique property boasts top-notch service with unique yet elegant accommodations, excellent dining options, and a vibrant rooftop bar. Situated in an idyllic position just south of the River Torrens and its series of parks, guests can easily explore the city by foot.

FEATURES

Restaurant | Bar | Romance | AC | Elevator | Parking | Breakfast



Adelaide Insiders and Market Culture

3 HOUR SMALL GROUP TOUR +

Get a true insider's glimpse into the heart of Adelaide through the eyes of a local. Discover the ins and outs of the city while exploring hidden gems within Central Market, meet resident potters and cheese makers, sip tea at a quaint café, and wander by the famous buildings surrounding Victoria Square.

Best of the Barossa

8 HOUR SMALL GROUP TOUR +

Embark on a journey through the stunning Torrens Gorge toward Barossa Valley, known for its robust wine production. Stop at a selection of famed wineries and small, family-owned cellars to taste fine varietals and learn about local grape production. Drive through old German-style towns and head up Menglers Hill for unbeatable scenery, stopping along the way for a curated lunch.

Hobart

TASMANIA



Discover the rugged wilderness and charming heritage towns.



Sitting on the River Derwent with the towering Mount Wellington as its backdrop, Hobart is Australia's awe-striking southernmost capital, boasting dynamic urban and natural offerings that beckon travelers. Surrounded by wildlife on the coast of Tasmania, Hobart is interestingly one of the world's only major cities where the dancing colors of the southern lights, or aurora australis, are visible all year long, making for a unique spectacle. Enjoy the perfect mix of city life and natural wonders in this metropolis full of welcoming people, unique art scenes, and excellent restaurants serving fresh seafood.

TRAVEL TIMES FROM HOBART BY AIR TO:

Sydney	1.75 Hours
Melbourne	1.5 Hours
Adelaide	2 Hours
Cairns	5.5 Hours
Brisbane	2.75 Hours
Uluru (Ayers Rock)	7 Hours
Perth	4 Hours

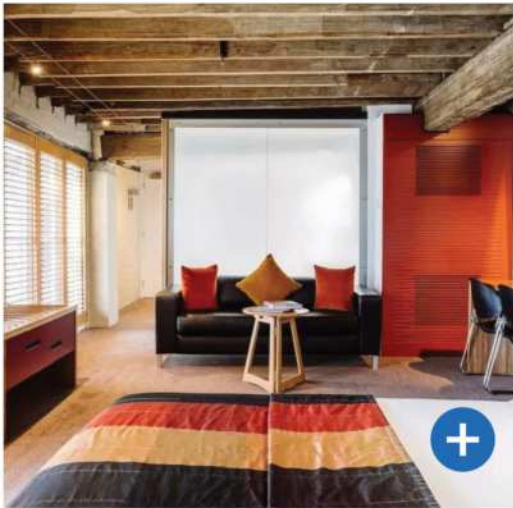


MACQ01 Hotel 4.5*

Faunting beautiful views of Hobart's dazzling piers that float over the River Derwent, this property is dedicated to creating a unique atmosphere that portrays stories of Tasmania's past and present. Choose between a variety of room designs which showcase diverse elements of the island, enjoy food and drink prepared with local ingredients, or wander to town by foot.

FEATURES

Restaurant | Bar | Romance | AC | Parking | Breakfast



Henry Jones Art Hotel 5*

Redesigned into a dazzling art hotel, this historic waterfront warehouse combines history and artistry, not only through its carefully selected décor, but with a series of galleries, eateries, and bars on site. Enjoy top-tier services and amenities all within walking distance from various attractions including the waterfront and the center of town.

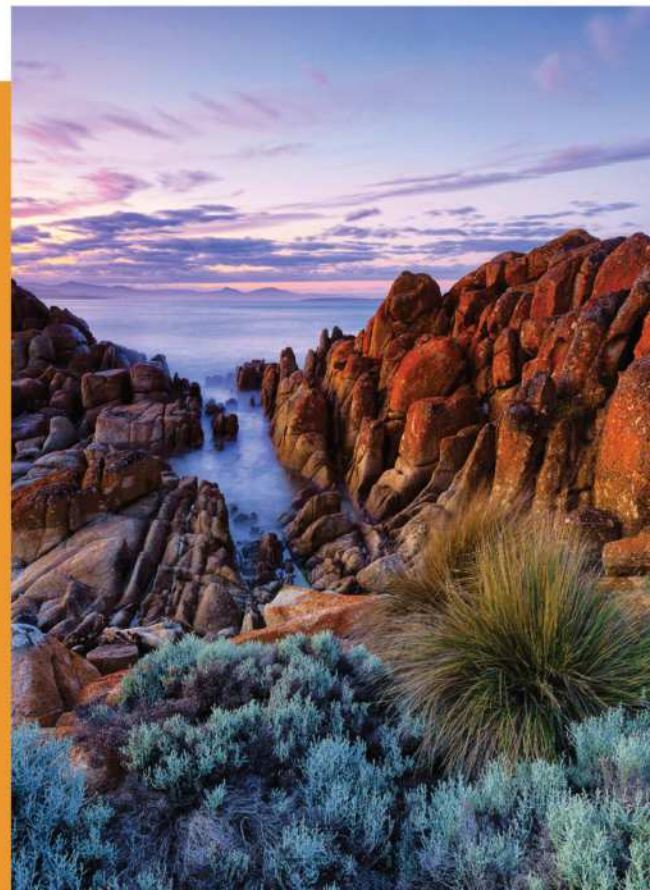
FEATURES

Bar | AC | Parking | Breakfast

Tasmania's Wilderness and Wildlife Tour

8 HOUR SMALL GROUP TOUR 

Discover the unparalleled beauty of Tasmania's Derwent Valley, a blend of natural wilderness and tiny historic towns with sprawling orchards and hop fields. After enjoying a picnic lunch, explore the flora, fauna, and waterfalls of Mount Field National Park, and witness the wombats, kangaroos, Tasmanian devils, and other unique creatures at the Bonorong Wildlife Sanctuary.



Brisbane



Australia's third most populous city is a haven for art, culture, and soft adventure.



Flanked by the surfing hotspots of the Gold and Sunshine Coasts, Brisbane is the state of Queensland's vibrant capital which offers a great mix of urban and outdoorsy offerings. Visitors can enjoy a leisurely stroll along Brisbane River's scenic South Bank, check out famous landmarks like Brisbane City Hall and Story Bridge, delve into history at the Queensland Museum, take an Aboriginal walking tour of the city, or try out several adventure options like hiking at the cliffs of Kangaroo Point.

TRAVEL TIMES FROM BRISBANE BY AIR TO:

Sydney	1.5 Hours
Melbourne	2 Hours
Adelaide	2.5 Hours
Hobart	2.75 Hours
Cairns	2.5 Hours
Uluru (Ayers Rock)	6 Hours
Perth	5.75 Hours

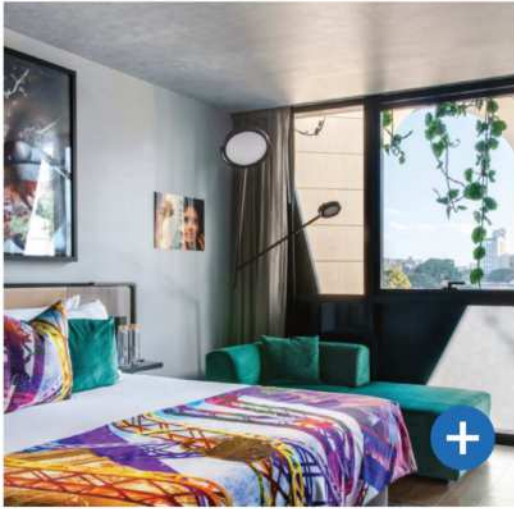


*Ovolo Inchcolm 4.5**

Built inside a restored 1930s building and conveniently located near attractions such as Roma Street Parkland and Brisbane City Hall, this luxury boutique hotel offers elegant rooms alongside notable amenities like The Inchcolm Bar — a sophisticated establishment primarily known for its Martini Hour.

FEATURES

Restaurant | Bar | Romance | AC | Elevator | Parking | Breakfast



*Crystalbrook Vincent 5**

Tucked underneath Brisbane's famous Story Bridge, this classy sustainable hotel carries a visual theme inspired by renowned Australian artist Vincent Fantauzzo. The modern property notably features contemporary rooms (some with river views) as well as a rooftop terrace with a bar and infinity pool.

FEATURES

Restaurant | Bar | Pool | Romance | AC | Elevator | Parking
Breakfast



Brisbane and Delectable Taste of Queensland

5 HOUR SMALL GROUP TOUR

Prepare yourself for a superb introduction to the mouthwatering world of Queensland gastronomy! This half-day experience takes you to 4 unique Brisbane venues where you'll sample a variety of local fare such as coffee, cheese, and cocktails. The tour also includes a stop to admire the river and city views.

North Stradbroke Island Tour from Brisbane

10 HOUR PRIVATE TOUR

Embark on a 45-minute ferry ride toward the second largest sand island of the world and enjoy a full day of spectacular views along the coastline, where you can spot kangaroos and whales during their migratory season. Visit the gallery of Delvene Cockatoo-Collins, a First Nations artist whose work embodies the natural elements and spirit of the Quandamooka region and people.

Whitsundays Hamilton Island

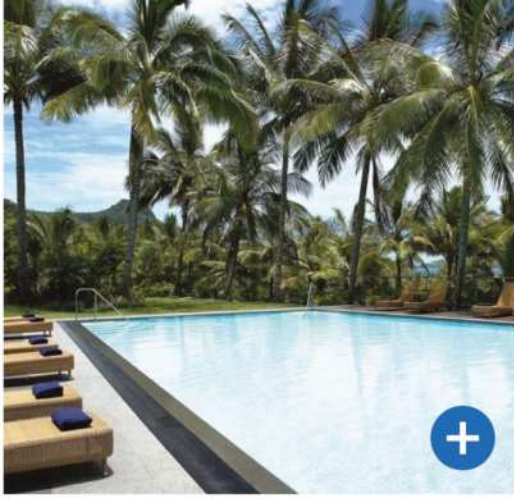
“ The gateway to the rest of the archipelago. ”

Comprised of 74 mostly uninhabited islands situated between northeast Queensland and the Great Barrier Reef, the Whitsundays are famed for their lush green rainforests and white sandy beaches. Hamilton Island, lovingly coined by locals as ‘Hamo,’ is the gateway to the rest of the archipelago.

Though it’s the most developed island of the Whitsundays, it remains car-free and is comprised mostly of bushland and thriving wildlife. With close proximity to the world’s most famed reef, the area boasts bountiful oceanic activities to expose its visitors to its corals and teeming sea life, whether through sailing atop the sea, snorkeling beneath the waters, or catching jaw-dropping views from the sky.

TRAVEL TIMES FROM WHITSUNDAYS BY AIR TO:

Sydney	2.5 Hours
Melbourne	3 Hours
Adelaide	6.5 Hours
Hobart	7.5 Hours
Brisbane	1.75 Hours
Cairns	1 Hour
Perth	8.5 Hours



Reef View Hotel 4* - Hamilton Island

Mere steps away from Catseye Beach, this stunning property offers notably spacious rooms – each with its own private balcony that overlooks the Coral Sea or a series of colorful tropical gardens. This hotel is a great escape for romantic couples seeking relaxation by the beach or the outdoor pool, and is also highly accommodating to children and families.

FEATURES

Restaurant | Bar | Pool | Romance | Family Friendly | AC | Elevator
Breakfast



Beach Club Resort 5* - Hamilton Island

A paradisaical property on the calming shores of Hamilton Island, this adults-only luxury resort offers a tranquil beachfront escape overlooking the Coral Sea. Perfect for a romantic getaway, couples can enjoy exquisite accommodations, a private restaurant, lounge, pool, and sauna, as well as access to water sports equipment for embarking on ocean adventures.

FEATURES

Restaurant | Bar | Pool | AC | Breakfast



Snorkel Whitehaven and Chalkies Beach

7 HOUR TOUR 

Enjoy a full day of sailing across the enticing turquoise waters that surround the Whitsundays Islands. Glide atop the waves on a classic catamaran and stop to relax on the pearly shores of Whitehaven Beach. Continue across the way to snorkel amongst some of the area's most stunning coral reefs and teeming sea life at Chalkie's Beach.



Snorkel the Great Barrier Reef Cruise with Lunch

8 HOUR TOUR 

Board a snorkeling vessel – custom designed with lounge seating, deck shading, onboard showers, and a swimming platform – and head out toward a series of moorings near the outer sections of the Great Barrier Reef. Spend the day witnessing the vibrant colors of anemones, fish, and teeming sea life while wading in the clear blue waters.

GREAT BARRIER REEF

Cairns



One of the most compelling reasons why Cairns is so magnetic for adventurous visitors is due to its position as the primary gateway for accessing two World Heritage Areas — the Great Barrier Reef (the world's largest coral reef system) and Daintree National Park (home of the renowned Daintree Rainforest). Divers, snorkelers, curious explorers, adrenaline seekers, backpackers, cruise passengers, and leisure travelers flock to Cairns every year to check out the region's breathtaking natural attractions.



Cape Tribulation, Daintree & Mossman

11.5 HOUR SHARED TOUR 

This epic adventure lets you visit three stunning places in and around Daintree National Park — Mossman Gorge Centre (an award-winning ecotourism facility outside the park entrance), Daintree Rainforest (the world's oldest tropical lowland rainforest), and Cape Tribulation (a coastal area that combines lush forest and beaches).

“ The gateway to
2 World Heritage Areas. ”

TRAVEL TIMES FROM GREAT BARRIER REEF (CAIRNS) BY AIR TO:

Sydney	3 Hours
Melbourne	3.5 Hours
Adelaide	3.25 Hours
Hobart	5.25 Hours
Brisbane	2 Hours
Uluru (Ayers Rock)	3 Hours
Perth	5.25 Hours

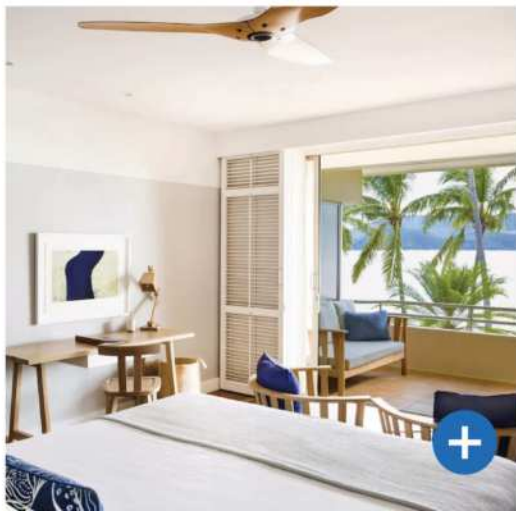


*Riley, A Crystalbrook Collection Resort 5**

This luxurious 5-star stay located in Cairns Esplanade — one of the most vibrant areas in the city — is an excellent base for checking out the region's best attractions. Hotel amenities include a variety of top-notch dining experiences, a superb spa, a 24-hour fitness center, and a dedicated concierge team.

FEATURES

Restaurant | Bar | Pool | Romance | AC | Elevator | Parking
Breakfast



*Bailey, A Crystalbrook Collection Hotel 5**

As the venue of regular art events and exhibitions, this unique luxury accommodation is perfect for patrons of the arts — the visual, the musical, the kinetic, the gastronomic, and everything in between. Enhancing your stay are amenities that include a casual eatery and a rooftop terrace with a cocktail lounge.

FEATURES

Restaurant | Bar | Pool | Romance | AC | Elevator | Parking
Breakfast

GREAT BARRIER REEF

Port Douglas

Port Douglas is a quiet seaside village where the rainforest meets the Great Barrier Reef. This chic, tropical paradise is known for its unspoiled white-sand beaches, crystal-clear waters, and dense greenery. Port Douglas offers a blend of relaxation and adventure, including diving expeditions into biodiverse underwater ecosystems, relaxing afternoons on the famous 4 Mile Beach, and immersive tours into the wilderness at Daintree Rainforest, a stunning World Heritage Site.



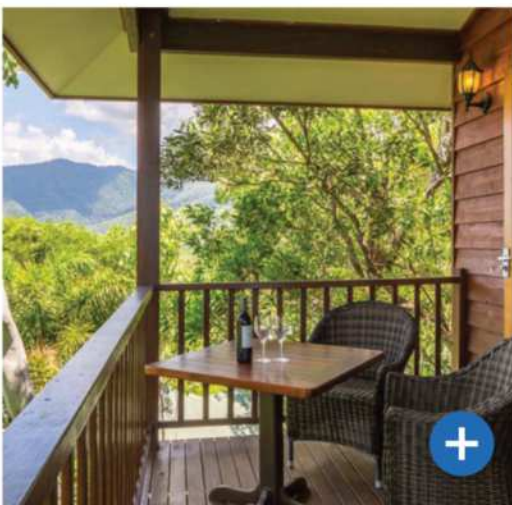
Peninsula Boutique Hotel

*Port Douglas 4.5**

Check out this adults-only retreat that offers an intimate beachside experience in the heart of Port Douglas. This beachfront boutique hotel gives its guests the privilege of a prime location amidst cosmopolitan boutiques, diverse restaurants, and unlimited entertainment.

FEATURES

Restaurant | Bar | Pool | Romance | AC | Elevator | Parking
Breakfast



*Thala Beach Nature Reserve 5**

Conveniently located just 10 miles south of Port Douglas, the Thala Beach Nature Reserve offers an unrivaled gateway to the tropical splendors of the region. This family-owned private property comes with spectacular ocean and mountain views.

FEATURES

Restaurant | Bar | Pool | Romance | Family Friendly | AC
Elevator | Parking | Breakfast



“ Immerse yourself in the sights and sounds of nature in the World Heritage Daintree Rainforest. ”



Sailaway Sunset Sail

1.5 HOUR TOUR 

Sit back and relax on a 1.5-hour top-tier catamaran cruise and sail across the Coral Sea. Glide along the Port Douglas coastline and appreciate the calming music, friendly ambiance, and the unparalleled mountain views alongside refreshments.



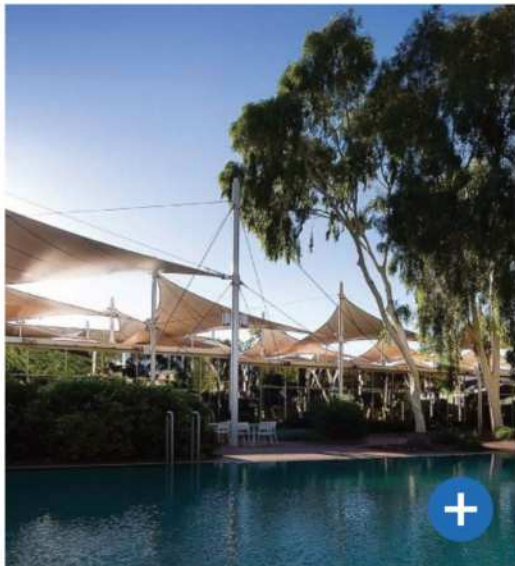
Quicksilver Outer Barrier Reef Cruise from Port Douglas

9 HOUR TOUR 

Located on the outer edge of the Barrier Reef is the Agincourt Reef – unique for its ribbon-like formations and unsoiled ecosystems. Join others in an exploration in crystalline waters and watch as the reef showcases its mesmerizing marine life.

Uluru (Ayers Rock)

Witness the heart of the Australian Outback in Uluru (also known as Ayers Rock), an awe-inspiring natural sandstone ridge and revered spiritual landmark. Rising majestically from the desert, this striking monolith is not only a must-see natural wonder but a sacred site of deep significance to the indigenous Anangu people. Experience the magic of Uluru's changing colors at sunrise and sunset and become immersed in the rich cultural traditions and scenic stays surrounding this breathtaking destination.

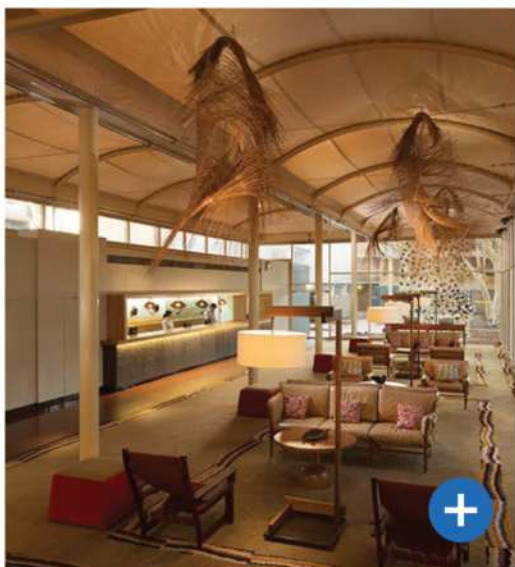


*Voyages Sails in the Desert Hotel 4.5**

Lying just beneath the Uluru lookout, Voyages Sails in the Desert Hotel is a true Outback marvel with its billowing white sail façade and incredible indigenous artwork. Discover an inviting gumtree-fringed pool, international brasserie, lobby and poolside bars, and a complimentary shuttle service to bring you to and from your elegantly furnished guest rooms.

FEATURES

Restaurant | Bar | Pool | Family Friendly | AC | Elevator
Parking | Breakfast Romance | Round-trip Airport Transfers



*Longitude 131 5**

A haven of desert opulence within Uluru-Kata Tjuta National Park, Longitude 131 offers a myriad of amenities even beyond its constant views of magnificent Uluru — including an outdoor pool, monolith-facing contemporary restaurant, and poolside and lounge bars. Experience an authentic Outback stay in lavish tented lodgings amidst the desert allure of the Red Center. * hotel is not located in the National Park, just bordering it.

FEATURES

Restaurant | Bar | Pool | AC | Parking | Breakfast | Romance
Round-trip Airport Transfers | *Touring



TRAVEL TIMES FROM ULURU BY AIR TO:

Sydney	3 Hours
Melbourne	3 Hours
Adelaide	6 Hours
Hobart	8 Hours
Brisbane	3 Hours
Cairns	2.5 Hours
Perth	10+ Hours



Uluru Sacred Sites and Sunset

5 HOUR TOUR

The tour begins before dawn with a pick-up from your accommodation at Ayers Rock Resort, and a short drive to the Uluru-Kata Tjuta National Park, where you will witness the spectacular sunrise over Uluru. As the sun rises over the horizon, the rock changes color, creating a breathtaking display of light and shadow that is both awe-inspiring and spiritual.



A Night at Field of Light with Dinner from Uluru

4.5 HOUR TOUR

Head into the remote desert and watch the sky as it changes hues and transitions into a canopy of stars, with the sacred Uluru as the backdrop. Enjoy sparkling wine, delicious food, and live music before wandering through a majestic field of lights.

ADDITIONAL FEATURED HOTELS

Voyages Desert Gardens Hotel 4*

Perth

“ The City of Light is a sunny gateway to some of Australia's most picturesque landscapes. ”



As one of the world's most geographically isolated big cities in the world, Perth has a character and vibe that makes it distinct from other populous places like Sydney, Melbourne, and Brisbane — all of which are located on the other side of the country. Perth is the capital of Western Australia and is renowned for being one of the world's most livable cities, for its ideally mild climate, and for its local attractions such as Kings Park and Botanic Garden, Elizabeth Quay, Swan River, and its many beaches.

TRAVEL TIMES FROM PERTH BY AIR TO:

Sydney	5.5 Hours
Melbourne	5.25 Hours
Adelaide	6 Hours
Hobart	4.75 Hours
Brisbane	5.75 Hours
Cairns	6.5 Hours
Uluru (Ayers Rock)	10.5 Hours

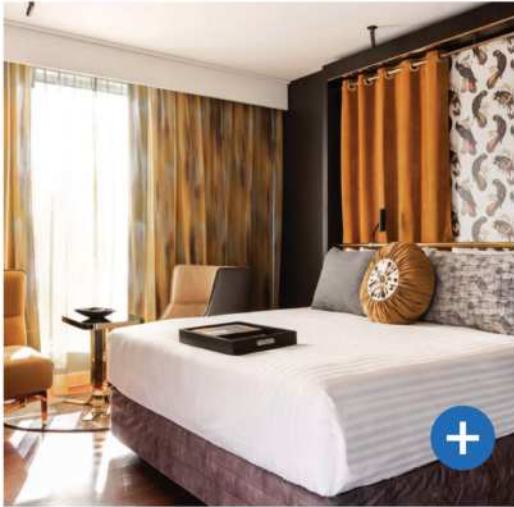


Intercontinental Perth City Center 4.5*

Stay at this upscale accommodation conveniently located in the beating heart of Perth's Central Business District. Along with convenient proximity to local draws like Elizabeth Quay, this hotel offers refined rooms with city views, an on-site fitness center, and several superb dining options.

FEATURES

Restaurant | Bar | Romance | AC | Elevator | Parking
Breakfast



QT Perth 4.5*

Located in an area near the Swan Bell Tower in Perth's CBD, this luxurious boutique accommodation features rooms decked with classy décor and elegant design touches ranging from polished hardwood floors and black marble bathrooms. Amenities include a grill-style restaurant, a rooftop bar, and a spa.

FEATURES

Restaurant | Bar | Romance | AC | Elevator | Parking
Breakfast



Perth and Fremantle Morning

4.5 HOUR CITY TOUR 

This guided tour distills the essentials of two neighboring locations — Perth and Fremantle — into one excellent half-day experience. Begin by checking out the Central Business District and major attractions like Kings Park. Cap your trip in Fremantle where you'll take in the sights of the historic port city.



Adventure Rottneest with Boat Ride - Includes Lunch

8 HOUR TOUR 

Set off on a full-day adventure to Rottneest Island where you'll take a guided walk to admire the stunning landscape and observe the fascinating wildlife before boarding a boat to circumnavigate the isle. Along the way, there's plenty of opportunities to take in stunning views of the Indian Ocean.

New Zealand

“ A symphony of unparalleled terrain that simply must be seen with one’s own eyes to fully appreciate. ”



A land where nature's finest creations converge with spectacular cities and a brilliant blend of cultures, New Zealand's captivating allure is truly unlike any other. From the majestic peaks of the Southern Alps to pristine beaches juxtaposed with rugged shorelines, New Zealand is a symphony of unparalleled terrain that simply must be seen with one's own eyes to fully appreciate.

With its wonderful traditions woven into many aspects of the country both old and new, the storied history of the Māori people is the driving force behind the vibrant energy of both the rural lands and modern cities. New Zealand's indigenous inhabitants infuse their rich heritage into every facet of life, from their traditional hangi buffets to intricate wood carvings and woven artwork — and it's easy to see even in the urban heart of bustling cities like Auckland and Wellington that diversity and innovation is celebrated in cuisine, art, and the overall way of life.

As diverse as its cultural heritage, New Zealand's landscapes form a harmonious mosaic. From traversing Westland National Park's otherworldly expanses to basking in Rotorua's steaming geysers, and even journeys through the green hillsides that inspired J.R.R Tolkien's Middle-earth, each corner of the country offers a unique perspective — and promises an unforgettable getaway that resonates with every traveler.



As diverse as its cultural heritage, New Zealand's landscapes form a harmonious mosaic.



Fox Glacier



Hooker Valley, Mount Cook

SEASONALITY

New Zealand benefits from a fairly uniform climate and is often considered a year-round vacation spot. While its northern region has subtropical summers and the inland of its southern island boasts cold alpine conditions, most of the country is set on a temperate coastline. It is often joked that New Zealand has several seasons in one day, sometimes experiencing a sudden downpour followed by beautiful sunshine – meaning that no matter the time of year, visitors should expect both sun and rain during their travels.

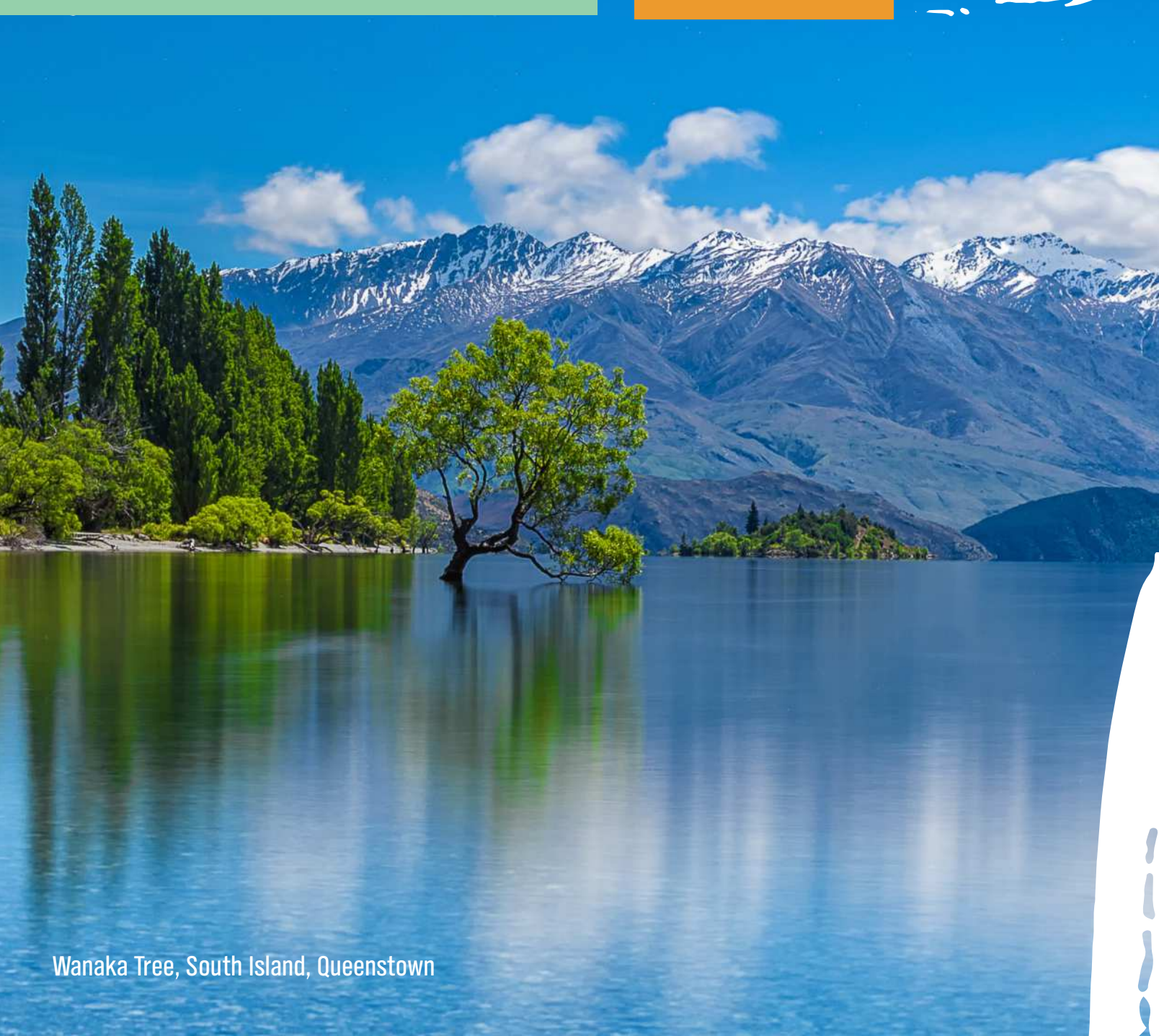
Best of NEW ZEALAND

AUCKLAND, ROTORUA,
CHRISTCHURCH, QUEENSTOWN


8 Days / 7 Nights

Immerse yourself in New Zealand's stunning beauty on this comprehensive self-drive itinerary that spans the country's two main islands. Start with an otherworldly visit to the Waitomo Glowworm Caves. You'll then learn more about the country's national bird at the Kiwi House before experiencing an authentic Māori welcoming ceremony. Continue your adventure in the South Island via a short flight to Christchurch. Enjoy a cruise through Milford Sound's majestic fjords before capping the trip with a thrilling Skyline Gondola ride in Queenstown.

LET'S GO!



Wanaka Tree, South Island, Queenstown

A hiker with a red backpack and a red cap stands on a rocky trail, looking towards the Franz Josef Glacier. The glacier is a massive, white, and blue ice formation nestled between steep, rocky mountains. The surrounding landscape is lush with green vegetation on the lower slopes, while the upper slopes are rocky and sparsely vegetated. The sky is bright blue with scattered white clouds.

Franz Josef Glacier

Span the entire spectrum of New Zealand's diverse scenery on this 14-day journey covering both of its incredible islands. From the vibrant cityscapes of Auckland to the geothermal wonders of Rotorua, the enchanting beauty of Christchurch to the adventure hub of Queenstown, this comprehensive tour offers a number of opportunities to become immersed in the country's natural wonders and experience its cultural heritage and captivating charm firsthand.

LET'S GO!

NEW ZEALAND *Discovery*

AUCKLAND, ROTORUA,
WELLINGTON, CHRISTCHURCH,
QUEENSTOWN, FRANZ JOSEF,
AND CHRISTCHURCH

14 Days / 13 Nights

Auckland

“ New Zealand's biggest city is a multi-cultural hub of art, culture, and cuisine. ”

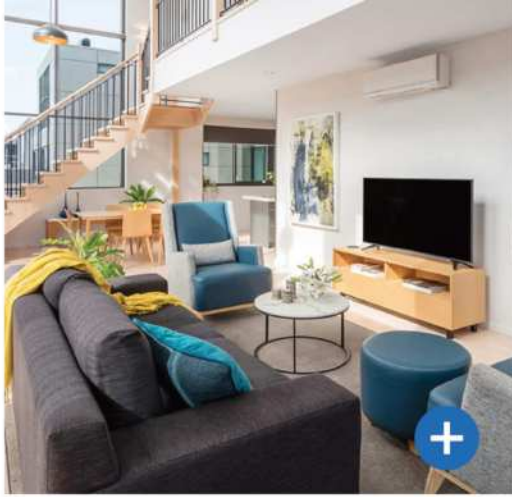
Located in the North Island, Auckland is the country's largest city in both population and landmass — a perfect destination to kick off your New Zealand vacation. The city's modern seaside urban sprawl is a fabulous contrast to the natural beauty of its surrounding region punctuated with a nearby rainforest, an island-studded gulf, and black-sand beaches. With its well-established local gastronomy, diverse neighborhoods, and thriving arts scene, Auckland offers a cosmopolitan experience with a very distinct Kiwi touch.

TRAVEL TIMES FROM AUCKLAND TO:

Rotorua (By Car)	3 Hours
Hawke's Bay (By Air)	1 Hour
Christchurch (By Air)	1.5 Hours
Queenstown (By Air)	2 Hours
Wellington (By Air)	1.25 Hours
Dunedin (By Air)	2 Hours

ADDITIONAL FEATURED HOTELS

Ramada Suits Auckland Victoria Street West 3.5*, Hotel De Brett 4*



Adina Apartment Hotel Auckland 3.5*

This laid-back accommodation located in Auckland's Central Business District offers guests a choice between modern open-style studios, classy apartments with bedrooms and separate living spaces, or lavish Penthouse suites. The contemporary hotel's notable amenities include on-site dining and a gym.

FEATURES

Restaurant | Bar | Family Friendly | AC | Elevator | Parking

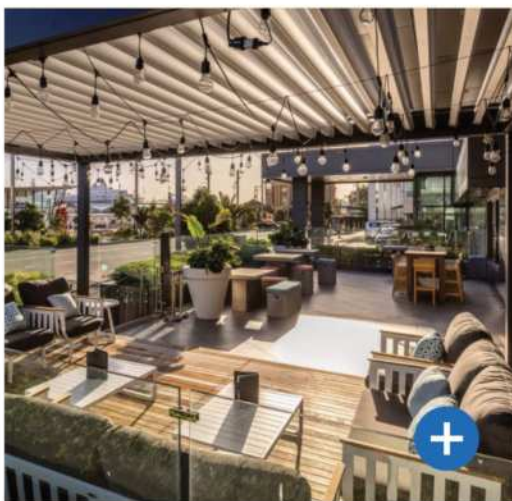


Heritage Auckland 4*

Housed inside a former department store building from the 1920s, Heritage Auckland offers well-appointed rooms and excellent proximity to local attractions like the Sky Tower and Viaduct Harbour. Notable amenities include 2 gymnasiums, 2 heated pools, a sauna, and an all-weather floodlit tennis court.

FEATURES

Pool | Romance | Family Friendly | AC | Elevator | Parking

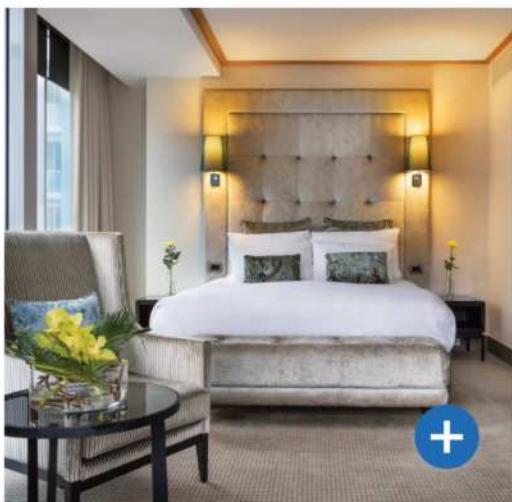


M Social Auckland 4.5*

This modern designer hotel overlooks the vibrant Princes Wharf — a commercial wharf that was transformed into a multi-story high-class development and cruise ship terminal. Alongside comfortable rooms, guests can enjoy Pacific Rim cuisine at the Beast & Butterflies, the hotel's signature restaurant.

FEATURES

Restaurant | Bar | Family Friendly | AC | Elevator Parking | Breakfast



Sofitel Auckland Viaduct Harbour 5*

Ideally located near top attractions such as Sky Tower and the Voyager New Zealand Maritime Museum, this upscale 5-star property delivers a premium accommodation experience. The 6-story hotel features a top-notch French restaurant that offers high-end fare, a lounge bar, and a cozy on-site spa with indoor pool.

FEATURES

Restaurant | Bar | Pool | Romance | Family Friendly | AC Elevator | Parking | Breakfast

Auckland City Revealed

3 HOUR TOUR 

Check out essential Auckland sights in this tour that lets you explore the bustling Central Business District, the inner-city park known as the Domain, the historic suburb of Ponsonby, and Harbour Bridge. Stroll along one of the local beaches before heading to the summit of Mt. Victoria to enjoy the views.





Māori Cultural Experience with Lunch from Auckland

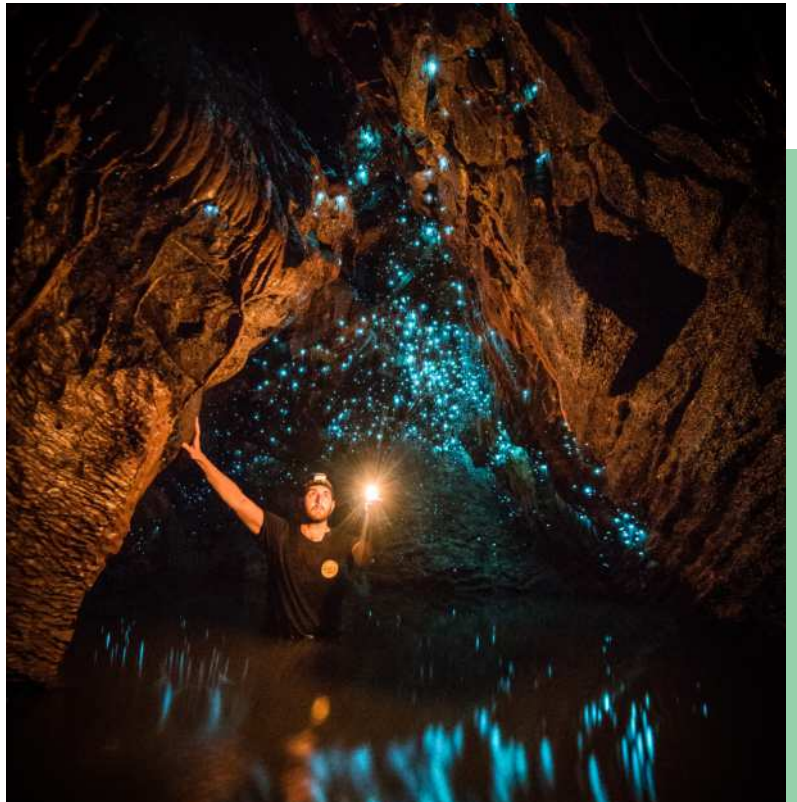
8 HOUR PRIVATE TOUR 

Learn more about the colorful Māori culture in this fascinating guided experience. You'll be able to practice Hongi (the traditional Māori greeting), witness a Haka performance (the famous Māori war dance), and check out rare plants at the Winter Gardens before capping the tour with a delicious picnic lunch.

Waitomo with Lunch from Auckland

8 HOUR PRIVATE TOUR 

Head south for this magical experience. The Waitomo Cave system is home to one of New Zealand's best natural attractions — *Arachnocampa luminosa*, a species of glowworms that can only be found in the country. Marvel at the way the creatures illuminate the caves as you glide along an underground stream.



Rotorua



Whether you're an outdoor enthusiast seeking options for hiking, biking, and ziplining, or a romantic couple hoping to unwind during the perfect spa getaway, Rotorua is set to impress with a series of natural sites and local luxuries.

Nestled on the shores of a lake with the same name, Rotorua is renowned not only for this namesake body of water, but for the active geothermal features of the area's natural hot springs, erupting geysers, and bubbling mud pools. Home to active indigenous villages and a traditional crafts and trades school, the New Zealand Māori Arts and Crafts Institute, visitors can expect to encounter various local wood carvings and hand-made weavings created by locals.

TRAVEL TIMES FROM ROTORUA TO:

Auckland (By Car)	3 Hours
Hawke's Bay (By Air)	2.5 Hours
Christchurch (By Air)	2 Hours
Queenstown (By Air)	3.5 Hours
Wellington (By Air)	1.25 Hours
Dunedin (By Air)	3 Hours



Known for the geothermal features of its surrounding natural hot springs, erupting geysers, and bubbling mud pools.

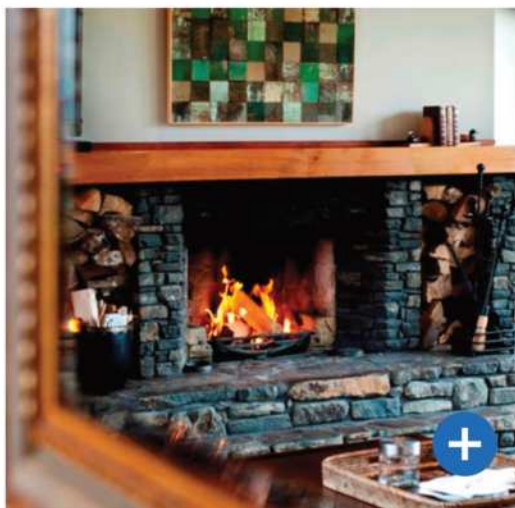


*Regent of Rotorua Boutique Hotel 4.5**

A perfect escape in the heart of New Zealand's geothermal Rotorua, this elegant boutique property is just steps away from the center of town as well as the waterfront of its namesake lake. Enjoy top-tier service, chic accommodations, and opportunities for relaxation – whether with a cocktail in hand by the heated pool or a rejuvenating soak in the mineral spa.

FEATURES

Restaurant | Bar | Pool | Romance | Family Friendly | AC | Parking
Breakfast



*Treetops Lodge 5**

Tucked amongst 2,500 acres of lush native forests just outside of Rotorua, this rustic yet elegant wilderness lodge offers a serene getaway. With subtle earth tones and natural fabrics, each apartment melds beautifully into the ambience of the forest, while the property prides itself on its sustainable, eco-friendly, community-based practices without compromising on luxury.

FEATURES

Restaurant | Bar | Pool | Romance | Family Friendly | AC
Parking | Breakfast

ADDITIONAL FEATURED HOTELS

Novotel Rotorua Lakeside 4*, On the Point 4.5*



Te Po Indigenous Evening Experience

3 HOUR TOUR



After savoring a variety of locally crafted dishes authentically prepared with a Māori flair at Pātaka Kai's famed restaurant, head to the intricately carved meeting house of Te Aronui a Rua to witness various cultural performances, from a traditional Māori welcoming ceremony to Haka dances. Tour the surrounding geothermal lands full of bubbling mud and dramatic steaming geysers.

Geothermal and Cultural

9 HOUR SMALL GROUP TOUR



Explore Rotorua's remarkable geothermal landscapes and volcanic terrain, from the vibrant Blue and Green Lakes and the panoramas of Tarawera, to the historical Buried Village and the living Māori communities who utilize the natural features of hot springs, steaming geysers, and boiling mud baths for cooking and bathing as well as medicinal and spiritual purposes.



Volcanic Landing of Mount Tarawera by Helicopter

40 MINUTE TOUR 

Soak up spectacular scenery of the impressive Mount Tarawera on a thrilling helicopter excursion. Explore aerial views of its domes and craters, formed by a destructive eruption in 1886, while learning all about the region's history, culture, and geology. Along the way, enjoy a stunning perspective of the Lakes District and nearby National Parks.

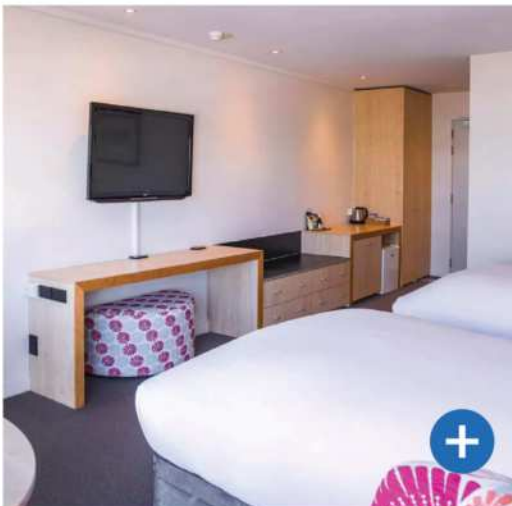
A hidden gem that is rising to the top of travelers' lists, Hawke's Bay is beloved for its calming scenery, sprawling farmlands, and artsy vibe. The region is surrounded by soft-sand beaches, dramatic cliffs, and beautiful waterfront docks on one side, and verdant vineyards on the

other. With rich soils and an idyllic climate, this area is an exemplary wine-producing region known for its award-winning varietals. The heart of this coastal stretch, Napier, is famed for its distinct 1930s Art Deco buildings and flaunts flawless views of the bay's waterfront.

Hawke's Bay

TRAVEL TIMES FROM NAPIER TO:

Auckland (By Air)	1 Hour
Rotorua (By Air)	2.5 Hours
Christchurch (By Air)	1.75 Hours
Queenstown (By Air)	3 Hours
Wellington (By Air)	1 Hour
Dunedin (By Air)	3.25 Hours

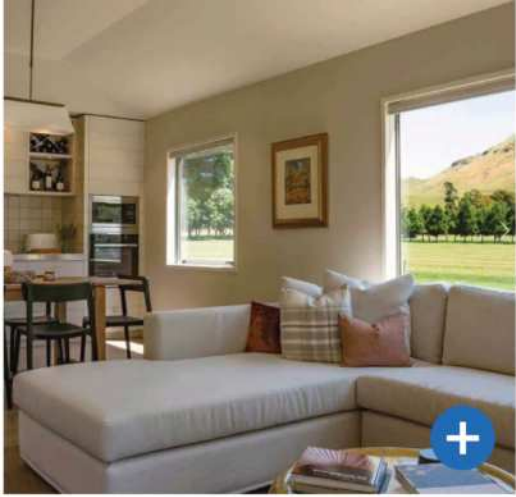


Scenic Hotel Te Pania 4 - Napier*

An iconic building overlooking the edge of Hawke's Bay, this scenic hotel boasts a crisp and colorful interior with unbeatable views of the water. Enjoy excellent food and fine scenery from the balcony of the Curve Restaurant and Bar, wander the path that parallels the waterfront, or visit the artsy streets of Napier just a few minutes away by foot.

FEATURES

Restaurant | Bar | Family Friendly | AC | Elevator | Parking
Breakfast

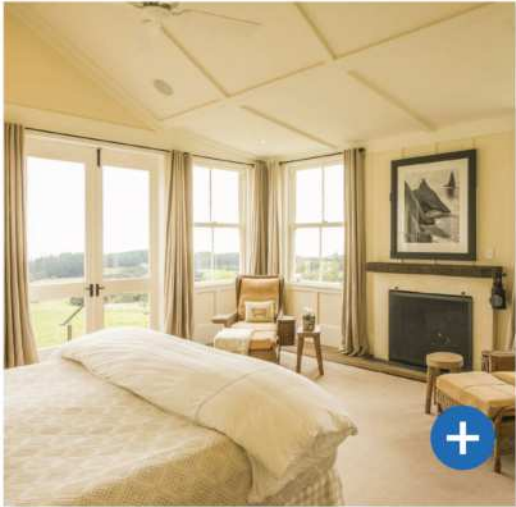


*Craggy Range Vineyards LTD 4.5** *- Havelock North*

About 25 minutes south of Napier on the riverfront of Tukituki, this family-owned winery features three lodges and six cottages where visitors can enjoy a secluded stay while encompassed by lush vineyards. Wander the pristine grounds and its verdant surroundings and sip on fine wines crafted on the property.

FEATURES

Restaurant | Bar | Pool | Romance | Parking | Breakfast



*The Farm at Cape Kidnappers 5** *- Hastings*

This sprawling, 6,000-acre farmland property is perched atop lush green hills that overlook Hawke's Bay. The acreage boasts a full-service spa, gourmet cuisine, a fully functioning farm, as well as its own private golf course. Soak up views of the water from a selection of luxury lodges, enjoy traversing the grounds, or venture to various nearby natural attractions.

FEATURES

Restaurant | Bar | Romance | Family Friendly | AC | Parking
Breakfast



Art Deco Vintage Car Tour from Napier

2 HOUR PRIVATE TOUR



With the accompaniment of a driver dressed in style, unveil Napier's history and heritage from the back seat of a vintage car. Discover how the town was destroyed after a devastating earthquake in the 1930s and completely reconstructed in the style of the times, making it the most intact Art Deco city of the world.



Hawke's Bay Food and Wine Lovers from Napier

7 HOUR TOUR



From distinguished Syrahs and crisp Chardonnays to a variety of rich red blends, some of New Zealand's most notable wines are produced in Hawke's Bay. Spend the day following in the footsteps of a renowned wine specialist and learn about the various vineyards of the area while sipping on fine varietals paired with decadent local bites.

Christchurch

“ Meticulously manicured parks, lush green spaces, and the serene Avon River. ”

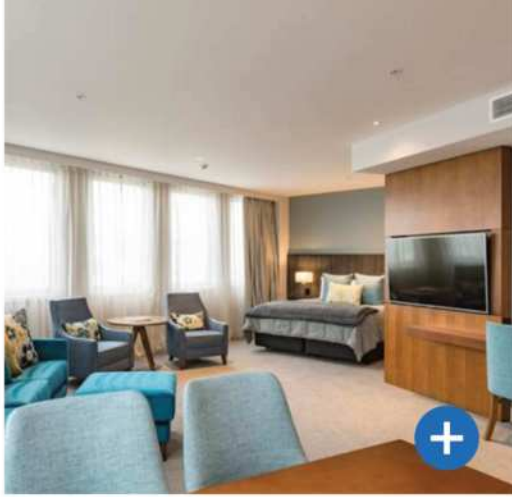
TRAVEL TIMES FROM CHRISTCHURCH TO:

Auckland (By Air)	1.5 Hours
Rotorua (By Air)	2 Hours
Hawke's Bay (By Air)	1.75 Hours
Queenstown (By Air)	1.25 Hours
Franz Josef (By Car)	5 Hours
Mount Cook (By Car)	3.5 Hours

Known as the "Garden City," Christchurch boasts an abundance of meticulously manicured parks, lush green spaces, and the serene Avon River. The city's fresh architecture demonstrates the resilience and creative revival that occurred after a devastating earthquake in 2010. This rebuild breathed new life into the city and led to the creation of vibrant street art and pop-up shops. Beautifully framed by New Zealand's Southern snowy Alps, this port town is a must-visit in New Zealand.

ADDITIONAL FEATURED HOTELS

Crowne Plaza Christchurch 4*, The George Hotel 4.5*



*Distinction Christchurch 4**

In the lively Cathedral Square, this property presents sophistication amongst the urban hustle and bustle and is only a quick stroll away from the city's most famous attractions such as the Avon River, the Botanical Gardens, Christchurch Casino, Cashel Mall and future Christchurch Convention Centre.

FEATURES

Restaurant | Bar | AC | Elevator | Parking | Breakfast

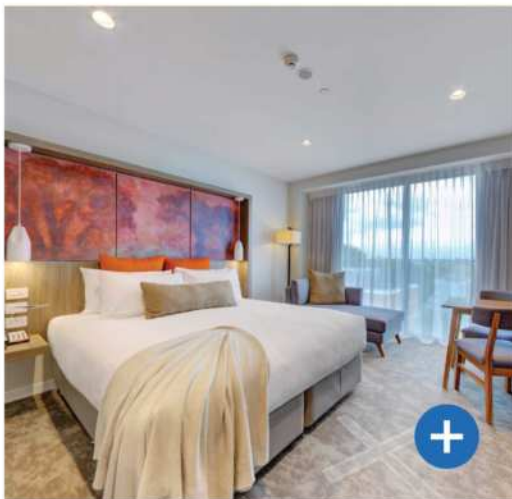


*Heritage Christchurch 4**

Step into this iconic property and see why it was awarded as a World Luxury Hotel several times. The Heritage Christchurch reminds us that preserving history can coexist with modernity. Originally constructed in the early 1900s, the building boasts exquisite renaissance style architecture that evokes a sense of grandeur and elegance.

FEATURES

Restaurant | Bar | Pool | | Parking

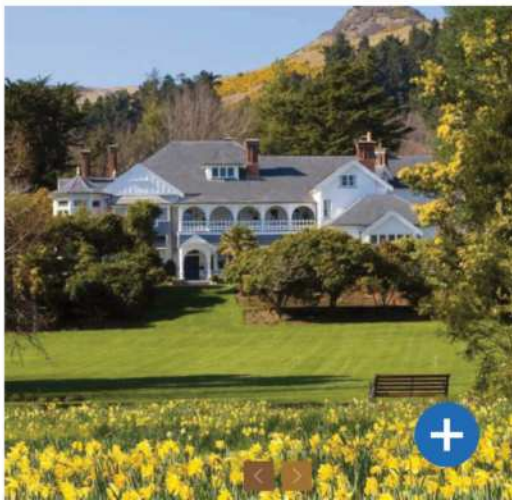


*Sudima Christchurch City 5**

Located on the popular vibrant Victoria Street near beautiful Hagley Park, this brand-new gem is surrounded by cafés, restaurants, and bars, offering an unbeatable location to experience the garden city of Christchurch. This 5-star property promises to elevate all its visitors' experiences.

FEATURES

Restaurant | Bar | Elevator | Parking | Breakfast



*Otahuna Lodge 5**

Nestled amidst the serene embrace of pastoral landscapes, Otahuna Lodge stands as a captivating Victorian mansion, with the backdrop of an ancient volcano, just a short distance of 12 miles south of Christchurch. Step away from the hustle of the city and enjoy the countryside of New Zealand.

FEATURES

Pool | Romance | Parking | Breakfast

Arthur Pass - Tranz Alpine Train and Guided Walk Tour with Lunch

10.5 HOUR TOUR 

Jump aboard the famous Tranz Alpine train, known for its unparalleled views. Glide through the breathtaking Waimakariri Gorge and experience the high peaks of the Southern Alps of Arthur's Pass. Following the ride, traverse via foot through Arthur's Pass National Park and witness limestone cliffs, gorges, and craggy outcrops.



Christchurch Highlights

4 HOUR PRIVATE TOUR



Take a journey through the heart of Christchurch as a knowledgeable driving guide showcases the city's history, resilience, and natural beauty. Witness firsthand how the city has transformed over the years, see the beauty of the botanical gardens, and see panoramic views from Port Hills overlooking Christchurch.

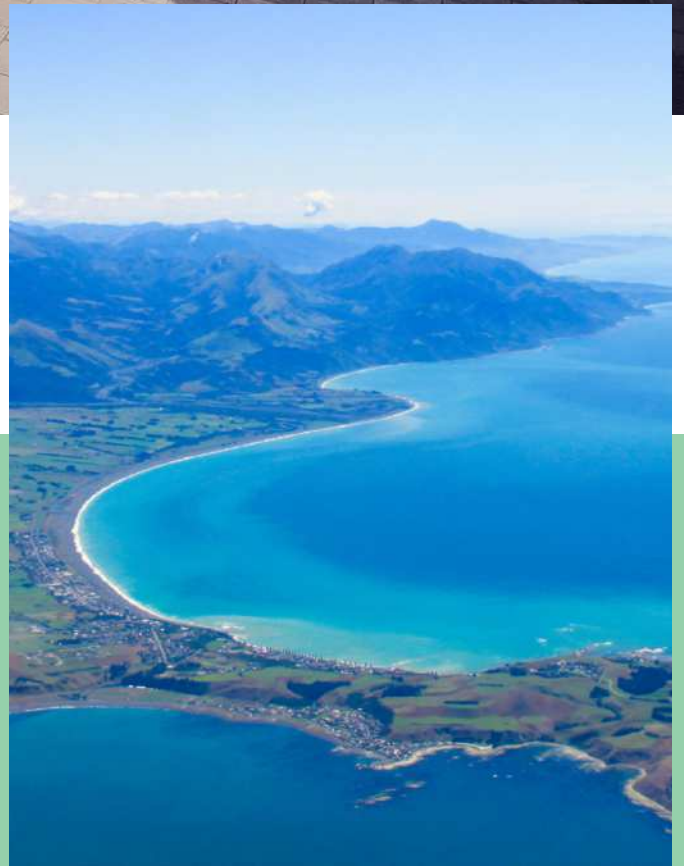


Kaikoura and Whale Watching Cruise

10.5 HOUR TOUR



Take a picturesque northbound journey from Christchurch, as the landscape evolves from fertile agricultural plains to undulating hill country. The road winds through the Hundalee Ranges, offering sights of playful fur seals and the occasional dancing dolphins before an unforgettable Whale Watching experience.



Franz Josef

Erupting from the lush green forest of Westland Tai Poutini National Park, the icy marvel of Franz Joseph Glacier is a truly breathtaking spectacle that has inspired travelers to hike, climb, and take to the air in order to witness its beauty. With a dynamic frozen river that stretches from the mountain peaks down into the rainforest, this ever-shifting glacier has drawn visitors from far and wide to explore not only its crevasses and ice formations, but the maze of mountain trails and charming town below — making for a nature lover's paradise.



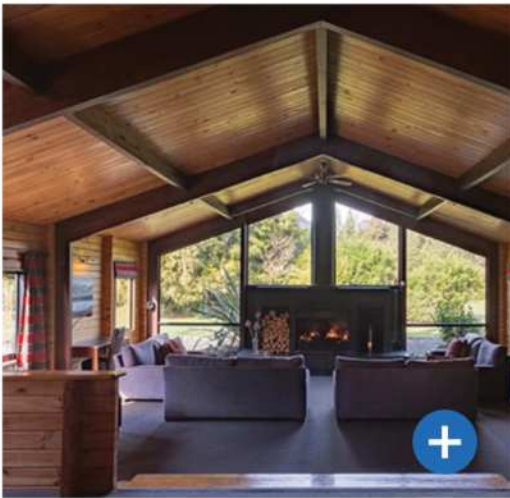
TRAVEL TIMES BY CAR FROM FRANZ JOSEF TO:

Queenstown	5 Hours
Christchurch	5 Hours
Fox Glacier	0.5 Hours



A dynamic frozen river that stretches along the mountain peaks down into the rainforest.





Westwood Lodge 4*

Nestled in the heart of New Zealand's glacier country, the charming bed and breakfast accommodations of Westwood Lodge offer cozy yet luxurious lodging beneath the majestic Southern Alps. With the trailheads of Franz Josef Glacier within walking distance, its perfect location is ideal for both exploration and relaxation.

FEATURES

Bar | Parking | Breakfast



Te Waonui Forest Retreat 4.5*

Escape to Te Waonui Forest Retreat, a sanctuary in New Zealand's pristine wilderness. This eco-friendly haven envelops you in some of New Zealand's oldest native rainforest, offering treetop dining at its Canopy Restaurant while providing luxurious rooms and spaces amidst rainforest views. Ample outdoor activities like hiking, scenic flights, kayaking, and more beckon outside this unique luxury hotel.

FEATURES

Restaurant | Bar | AC | Romance | Family Friendly | Parking
Breakfast

Franz Josef Hiking with Helicopter Ride

3 HOUR SMALL GROUP TOUR



Take in exceptional views of the stunning Franz Josef Glacier from above and below on this scenic tour around Westland National Park's iconic landmark. Witness the entirety of the 7-mile-long glacial mass on a thrilling helicopter ride before exploring its pristine alpine surroundings with the help of crampons, glacier boots, and an expert guide.



Fox Glacier

“ Immerse yourself in the pristine beauty of nature and cozy accommodations of the quaint mountain village nearby. ”

Explore the enchanting Fox Glacier, a natural wonder along the western coastline of New Zealand's South Island. This icy giant, part of the awe-inspiring Southern Alps glacial group, offers a surreal spectacle best viewed

by guided glacier walks to witness the dynamic ice formations and striking blue crevasses. Immerse yourself in the pristine beauty of nature and cozy accommodations of the quaint mountain village nearby.



*Heartland Hotel Glacier Country 3**

Experience South Island's rustic charm and warm Kiwi hospitality at Heartland Hotel Glacier Country. Offering an idyllic gateway to the stunning Fox Glacier within just a 5-minute drive, this recently renovated hotel boasts over 50 guest rooms and a revamped restaurant and bar — all inspired by the surrounding west coast wilderness.

FEATURES

Restaurant | Bar | Family Friendly | Parking | Breakfast



*Distinction Fox Glacier Hotel 4**

Indulge in rugged luxury at Distinction Fox Glacier Hotel, nestled in the captivating Fox Glacier village within New Zealand's incredible coastal alpine region. Take in stunning views of the Southern Alps from its private balconies, unwind in the cozy lounge by the fireplace, or refuel your next adventure with hearty breakfasts in the on-site restaurant.

FEATURES

Bar | Elevator | Parking | Breakfast



Queenstown

“Stunning vistas, serene lakes, and rugged alpine mountain ranges.”



In the heart of the Southern Alps off New Zealand's South Island and known for its unparalleled beauty is the picturesque town of Queenstown. Renowned worldwide for its stunning vistas, serene lakes, and rugged alpine mountain ranges. Adrenaline junkies find themselves bungy jumping off bridges, quadding through the mountains, white water rafting through the intense river, summiting peaks, and so much more. It is a haven for adventure enthusiasts, but also is a place to slow down and connect with nature.

TRAVEL TIMES FROM QUEENSTOWN TO:

Auckland (By Air)	2 Hours
Rotorua (By Air)	3.5 Hours
Christchurch (By Air)	1.25 Hours
Hawke's Bay (By Air)	3 Hours
Franz Josef (By Car)	5 Hours
Mount Cook (By Car)	4 Hours

ADDITIONAL FEATURED HOTELS

Hidden Queenstown 4.5*, Eichardt's Private Hotel 5*

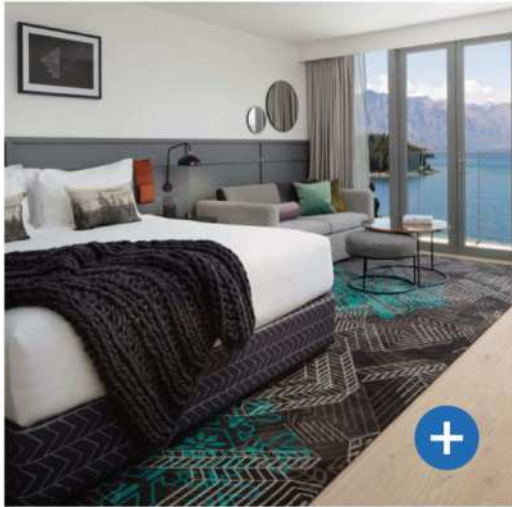


Hotel St Moritz - MGallery 4*

Take in panoramic views at this 7-story haven with views stretching from Lake Wakatipu to the Remarkables mountain range. Enjoy the property's array of amenities including a state-of-the-art gym for wellness enthusiasts and an award-winning restaurant that fills taste buds with international flavors.

FEATURES

Restaurant | Bar | Romance | Elevator | Parking | Breakfast



QT Queenstown 4*

Located near the tranquil shores of Lake Wakatipu boasts a luxurious property for travelers seeking relaxation and adventure. With an inviting outdoor pool that overlooks the sensational landscapes, guests can unwind while soaking up the views alongside delicious international cuisine.

FEATURES

Restaurant | Bar | Pool | Romance | Family Friendly | AC | Elevator | Parking | Breakfast

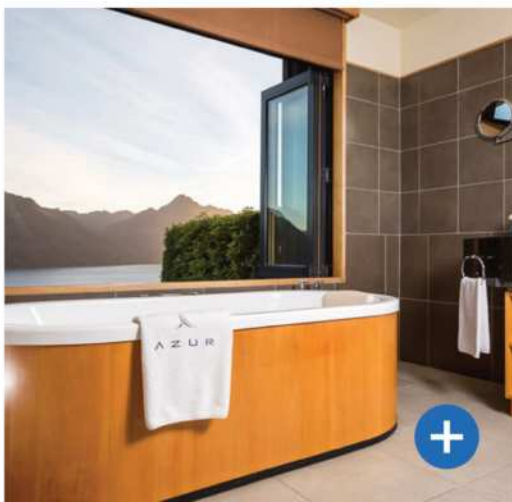


Queenstown Park Boutique Hotel 4.5*

Tucked away in lush greenery only a few minutes' walk from city center is the Queenstown Park Boutique hotel, renowned for being immersed in the surrounding mountains and lakes. This getaway retreat not only shows off nature's beauty but also offers beautiful and thoughtfully designed rooms.

FEATURES

Restaurant | Romance | AC | Elevator | Parking | Breakfast



Azur Lodge 5*

Perched on the hilltop with unmatched views of the majestic Remarkables mountain range marks 9 private villas with ceiling to floor windows. Uniform in their lavish offerings, these villas cocoon guests in comforts – from the inviting lounge and the allure of a gas fireplace to a dining space that invites shared moments.

FEATURES

Bar | AC | Romance | Breakfast



Shotover Jet Ride

25 MINUTE TOUR



Experience the thrill of one of the globe's most exhilarating jet boat rides. Only Shotover Jet has the authorization to navigate through the awe-inspiring Shotover River Canyons. Hold on tight for a pulse-pounding journey as you skim beside rugged rock formations and navigate intricate twists within the narrow canyons at astonishing speeds.

Central Otago Food and Wine with Lunch

4.5 HOUR PRIVATE TOUR



Sip and taste some of New Zealand's top wines and culinary delights on this meticulously crafted tour. Alongside a knowledgeable guide, indulge in 3 different wineries just 20 minutes from Queenstown — finishing with a delightful lunch among the vineyards.



Milford Heli Cruise

4 HOUR PRIVATE TOUR 

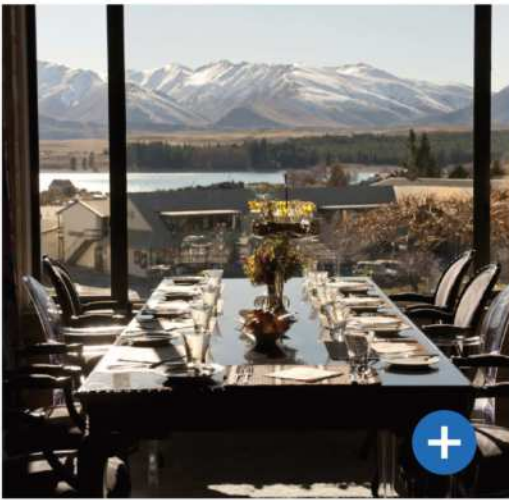
Marvel at the mountains, cascading waterfalls, and exceptional wildlife over the Southern Alps as a skilled pilot and local guide navigates a comfortable helicopter ride from Queenstown to Milford Sound. Concluding the cruise, fly back to Queenstown, complete with a memorable alpine landing along the way.



Tekapo & Mt. Cook

Discover the celestial magic of Lake Tekapo & Mt. Cook, where nature's grandeur takes center stage. The enchanting turquoise waters of Lake Tekapo mirror the endless southern stars to create an astronomical oasis, while towering above, the sprawling

acreage of Mt. Cook National Park boasts rugged alpine terrain, glaciers, and New Zealand's highest peak, Aoraki (Mount Cook). A paradise for stargazers, hikers, and nature lovers, both natural wonders offer hundreds of opportunities to connect with the raw beauty of New Zealand.



Lake Tekapo Lodge 4*

Just off the shoreline of the scenic lake for which it is named, Lake Tekapo Lodge exudes a unique charm and aura as magical as the waters themselves. Curated by a local New Zealand couple with a rich background in Kiwi hospitality, this cozy stay showcases contemporary art, an exceptional dining room offering picturesque vistas, and a guest lounge complete with a library and a crackling fireplace.

FEATURES

Bar | Parking | Breakfast



The Hermitage 4*

Stay in some of the region's most iconic accommodations at the legendary Hermitage Hotel located in the heart of the Aoraki Mount Cook Alpine Village underneath the majestic mountain. An incredible base camp for your outdoor adventure, its diverse range of thrilling activities like off-road driving tours and collection of restaurant options make a great introduction into the alpine area.

FEATURES

Restaurant | Bar | Parking | Breakfast



Glacier Cruise and Walking

2.5 HOUR TOUR 

Experience the many angles of the ever-changing Tasman Glacier ice face from both the trail above and water below on this comprehensive cruise and trek. Witness the mesmerizing spectacle of the ice melting before your eyes in the tranquil embrace of a glacial lake, cradled within the majestic Southern Alps of New Zealand.

TRAVEL TIMES BY CAR FROM LAKE TEKAPO TO:

Queenstown	3.25 Hours
Christchurch	3 Hours
Fox Glacier	6 Hours



Tasman Glacier Heli-Hike with Scenic Helicopter Flight

3.5 HOUR SMALL GROUP TOUR 

Soar above the awe-inspiring Tasman Glacier and its mesmerizing ice formations on this heart-pumping helicopter excursion. Upon landing at 3,940 feet, your knowledgeable guide will lead you on a scenic 2-hour trek across the pristine 'white ice' beneath the towering peaks of Mount Cook and Mount Tasman, witnessing the massive icefalls cascading down the mountainside on the flight back to camp.



Big Sky Stargazing from Mount Cook

1.5 HOUR TOUR 

Embark on an astronomical adventure of a lifetime in the stargazing haven of Mount Cook. Starting with a captivating sky show in the Theatre Planetarium, your expert guides will then lead you out into the pristine Aoraki Mackenzie International Dark Sky Reserve to view the celestial wonders with the naked eye, powerful binoculars, and cutting-edge telescopes.

Fiji

“ Witness the colors of nature burst to life in the idyllic paradise of Fiji. ”



Mala Mala Island

Witness the colors of nature burst to life in the idyllic paradise of Fiji, a mesmerizing destination where turquoise waters, white sands, and green palm trees thrive under the warmth of the tropical sun as it fades into a pink masterpiece.

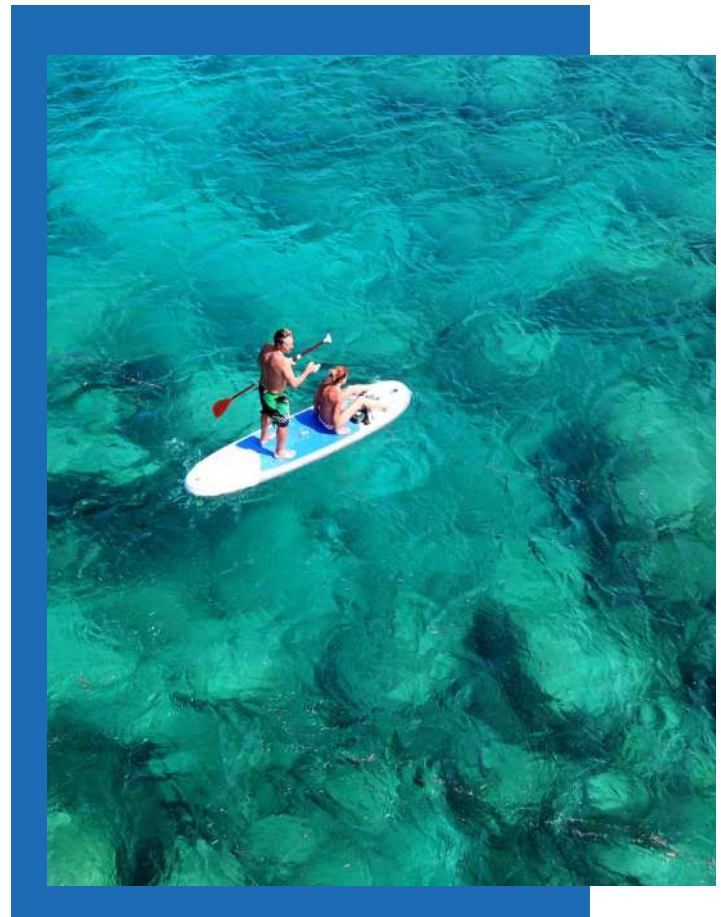
Immerse yourself in the embrace of nature's beauty as you journey through Fiji's lush landscapes and captivating biodiversity. From the vibrant coral reefs that fringe the coastline to the emerald canopies of dense rainforests, Fiji is a haven for nature enthusiasts. Snorkel through crystalline waters alive with colorful marine creatures, embark on exhilarating hikes through hidden trails that lead to cascading waterfalls, or simply bask in the tranquil sounds of waves lapping along picturesque shorelines.

Equally as warm as its glowing sunshine, the famous hospitality of the Fijian people is its own highlight, as their genuine smiles and heartfelt 'Bula!' greetings welcome you into their world of tranquility. Indulge in the luxury resorts that seamlessly merge with the surroundings, with offerings from overwater bungalows to private beachfront villas that create an unparalleled haven of relaxation. Whether you seek adventure through water sports, relaxation on secluded beaches, or immersing in cultural experiences, Fiji offers a plethora of travel opportunities that cater to all.



Navala village Viti Levu

“ Snorkel through crystalline waters alive with colorful marine creatures, embark on exhilarating hikes through hidden trails that lead to cascading waterfalls. ”



SEASONALITY

In terms of weather, the Fijian archipelago is the most reliable. Located just south of the equator, Fiji boasts a consistently pleasant sub-tropical atmosphere. Though it technically has a rainy season (December to April) and a dry season (May to October), Fiji is pleasant all year long, and is coined as having a “warm season” and a “warmer season.”

Fiji SHORT & SWEET

CORAL COAST, NADI OR
DENARAU

4 Days / 3 Nights

See all Fiji has to offer by visiting some of the gems that represent the country. Lay on the golden beaches of the Coral Coast, get a glimpse of Fiji's rich heritage and warm hospitality of the locals in Nadi, and rejuvenate in some of Fiji's most luxurious hotels in Denarau.

LET'S GO!



Denarau Port



Embark on an extraordinary Fijian adventure and experience the archipelago's amazing natural beauty as you traverse the stunning Coral Coast, explore the vibrant towns of Nadi and Denarau, and set sail to the remote paradise of the Yasawa Islands. Whether in search of serene sandy coastlines or thrilling tropical excitement, the lush landscapes and crystal-clear waters along this journey through paradise provide stunning highlights for every type of traveler.

LET'S GO!

FIJI *Paradise*

CORAL COAST, NADI, OR DENARAU AND YASAWA

8 Days / 7 Nights

Denarau



A slice of paradise set amongst lush tropical gardens, golf courses, and flawless beaches.



A tiny peninsula split off from mainland Fiji by a series of small rivers, Denarau Island is a popular resort getaway just fifteen minutes from Nadi International Airport. This slice of paradise is set amongst lush tropical gardens, sprawling golf courses, and flawless beaches brushed up against the island's aquamarine waters.

TRAVEL TIMES FROM DENARAU PORT OR NADI AIRPORT TO:

Mamanuca (By Catamaran from Denarau)	1.5 Hours
Coral Coast (Land Transfer from Nadi)	1.5 Hours
Yasawa (Catamaran from Denarau)	4.5 Hours
Savusavu (Flight from Nadi)	1 Hour

ADDITIONAL HOTELS

RadissonBlu Resort Fiji 5*

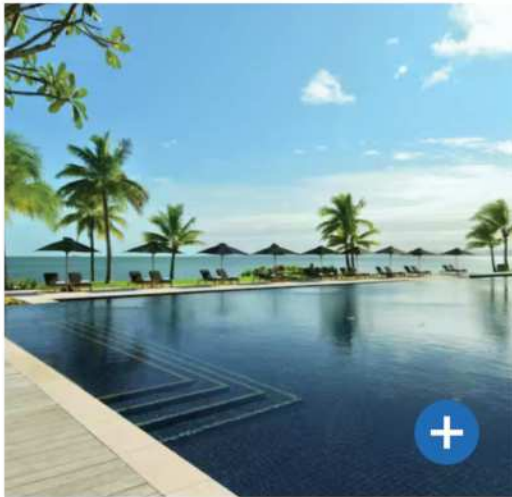


*Sofitel Fiji Resort & Spa 5**

This elegant resort perfectly blends top-tier luxury with Fijian beachside bliss, melding French style décor, cuisine, and spa services with local influences. Each of its refined, modern rooms face the shimmering aqua waters of Nadi Bay, offering seamless access to the ocean, outdoor pool, and exquisite gastronomy on site.

FEATURES

Restaurant | Bar | Pool | Family Friendly | AC | Parking
Breakfast



*Hilton Fiji Beach Resort & Spa 5**

Located on a private beach that stretches over one mile, and boasting seven pools on the property, this resort is an idyllic waterfront getaway with bountiful opportunities for relaxation and sunbathing. With child-friendly amenities as well as adults-only areas of the resort, this stunning modern property is perfect for families as well as romance.

FEATURES

Restaurant | Bar | Pool | Romance | Family Friendly | AC
Parking | Breakfast



*Sheraton Fiji Golf Resort 5**

An oceanfront property speckled with palm trees and backed by a sprawling verdant golf course, guests can embrace a leisurely escape chock-full of the island's Bula spirit. Enjoy water sports, fine restaurants, lush gardens, secluded patios, lagoon-style pools, and golf clubs, all within the grounds or just mere steps away from the front door.

FEATURES

Restaurant | Bar | Pool | Family Friendly | AC | Parking
Breakfast



Denarau Beach

Coral Coast

“ Experience a memorable blend of culture, nature, tranquility, and adventure. ”

This stunning 50-mile stretch of coastline on the island of Viti Levu is one of Fiji's popular tourist draws — an area characterized by sun-kissed beaches, rocky outcrops, sugarcane fields, pine forests, expansive views of the Pacific Ocean, and a refreshingly laidback local vibe. The Coral Coast is home to the parabolic formations of the famed Sigatoka Sand Dunes, Fiji's first national park.

ADDITIONAL HOTELS

The Naviti Resort 4*, Outrigger Fiji Beach Resort 5*



*Shangri-la Yanuca Island Fiji 5**

- Coral Coast

This luxury property on Yanuca Island features accommodations with ocean, lagoon, or terrace views. The resort boasts amenities including 5 restaurants, 2 bars, an adults-only area, a 9-hole executive golf course, and a cozy spa.

FEATURES

Restaurant | Bar | Pool | Romance | Family Friendly | AC | Parking | Breakfast



*Fiji Marriott Resort Momi Bay 5**

- Momi Bay

This contemporary property on the western coast of Viti Levu offers well-appointed accommodations designed to be modern takes on traditional Fijian wood and straw huts. The hotel features restaurant and bar options, 3 outdoor pools, a spa, and a gym.

FEATURES

Restaurant | Bar | Pool | Romance | Family Friendly | AC | Parking | Breakfast



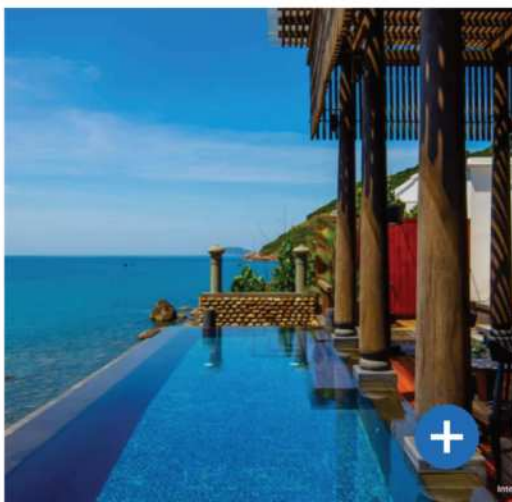
*The Warwick Fiji 5**

- Coral Coast

This all-inclusive beachfront property is an excellent choice for visitors who wish to explore Fiji's Coral Coast. The upscale hotel's amenities include a spa, a fitness center, 2 outdoor pools, and 5 restaurants serving a variety of cuisines.

FEATURES

Restaurant | Bar | Pool | Romance | Family Friendly | AC | Parking | Breakfast | All-Inclusive comes with additional cost



*Intercontinental Fiji Golf Resort & Spa 5**

- Natadola Bay

Nestled along Fiji's famous Natadola Beach, this über upscale accommodation embodies a superlative coastal experience like no other. The hotel features a luxury spa, an 18-hole championship golf course, and world-class dining options.

FEATURES

Restaurant | Bar | Pool | Romance | Family Friendly | AC | Parking | Breakfast



Home to the majority of Fiji’s population and the largest island, Viti Levu serves as a gateway to many popular destinations such as the nation’s point of entry, Nadi (pronounced Nandi). This island is specifically known for being a rich tapestry of the country’s natural beauty and Fijian’s warm hospitality.



Captain Cook Sunset Dinner Cruise

3 HOUR TOUR



Board one of Fiji’s largest and most luxurious catamarans in the Southern Hemisphere. Sit back, take in the incredible views, watch authentic Fijian entertainment, and sip on a complimentary welcome drink alongside a local chef’s traditional meal.



Zip Line Tour

3 HOUR TOUR



Looking to see Fiji through the perspective of the treetops? Only 35 minutes from Nadi is Momi Bay – an action-packed location for the adrenaline junkies. Abseil off cliffs into caves with drops cumulating as much as 33 meters and climb up rock faces.



Malamala Beach Club Day Cruise

7.5 HOUR TOUR 

Journey on a 7.5 hour cruise from the powdery white sands of the private island and sail over the crystal-clear waters of the mesmerizing Pacific Ocean. Soak in the Fijian sun, indulge in a Pacific-inspired meal, and snorkel next to the marine life bursting with color.

This island includes Port Denarau, the Coral Coast, Pacific Harbour, and the capital city of Suva. Each region has its own set of unique and desirable characteristics, making it a diverse destination for holidays, families, or adventure enthusiasts. Fiji has so much to offer, and it all starts in Vitu Levu.



Island Hopping by Helicopter

30 MINUTE TOUR 

Don't waste any island time waiting for a ferry or transfer, take the scenic route via helicopter and see Fiji from the sky. Hop island to island on these 20 to 30 minute flights, offering the opportunity to see different perspectives of the lush rain forests and the highlands of the stunning islands.



Sigatoka River Safari

8 HOUR TOUR 

Step onto Fiji's original jet-boat safari, The Sigatoka River Safari. Glide along the Sigatoka River and experience the local history, Fijian villages, and what it looks like to be a Fijian for a day. Let the locals guide the journey and share their stories and their legends.

Mamanuca



A popular tropical escape that offers immersive paradisiacal experiences.



Composed of over 20 picturesque islands — seven of which are covered by the Pacific Ocean when the tide is high — Mamanuca is a volcanic archipelago that boasts palm-fringed white-sand beaches, crystal-clear waters, colorful and fascinating marine life, and exciting water activities. The islands are home to superb family friendly resort accommodations and romantic adults-only tropical getaways.

ADDITIONAL FEATURED HOTELS

Malolo Island Resort 4*, Tokoriki Island Resort 5*

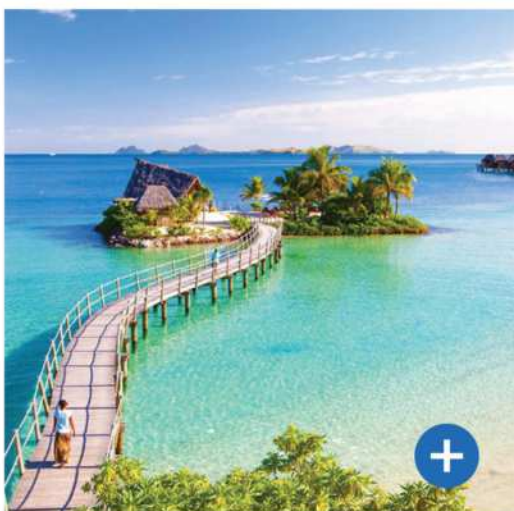


*Castaway Island Fiji 4**

Aptly named since one of the uninhabited islands in the Mamanuca archipelago was the setting for the film 'Cast Away' which starred Tom Hanks, this 174-acre private island resort offers a different kind of getaway anchored by its 65 traditional 'bure' bungalows and excellent amenities.

FEATURES

Restaurant | Bar | Pool | Romance | Family Friendly | AC



*Likuliku Lagoon Resort 5**

Stay at this opulent adults-only accommodation set along a white-sand beach and surrounded by tropical vegetation. | The all meal inclusive 5-star property boasts 45 bungalows (some of which are overwater options) and facilities designed to resemble a traditional Fijian village.

FEATURES

Restaurant | Bar | Pool | Romance | AC | Meal Inclusive



*Six Senses Fiji 5**

Accessible via speedboat or helicopter, this lavish eco-resort effortlessly blends modern luxury and comfort with traditional Fijian architecture and design elements. The property features solar-powered accommodations alongside amenities like private pools, superb dining options, and spa facilities.

FEATURES

Restaurant | Bar | Pool | Romance | Family Friendly | AC
Breakfast

An aerial photograph of a tropical coastline. The top half shows rolling green hills with a dirt road winding through them. The bottom half shows a white sandy beach curving along the shore, with clear turquoise water transitioning to deeper blue. A large rock formation is visible in the water on the right side.

Yasawa

“ Abundant with an exotic beauty that has inspired everything from movie backdrops to television scenes. ”

Full of dramatic peaks, sun-drenched beaches, and palm tree-lined coasts, the Yasawa Island group is a quintessential Fijian paradise just northwest of its main island Viti Levu. Abundant with an exotic beauty that has inspired everything from movie backdrops to television scenes, these islands are a haven for both nature lovers and those seeking pure island tranquility. Immerse in warm Fijian hospitality, savor local cuisine, and explore the underwater coral gardens all throughout this jewel of the South Pacific.



*Navutu Stars Resort 4**

Indulge in the island allure of Navutu Stars Resort, whose ten thatched-roof villa-style bures grace Yasawa's famous white-sand beaches with Mediterranean-inspired interiors, soaring 26-foot ceilings, and private gardens for a romantic feel. Enjoy a range of amenities including an international restaurant, tropical spa, and complimentary activities like sunrise yoga, snorkeling, and kayaking.

FEATURES

Restaurant | Bar | Breakfast

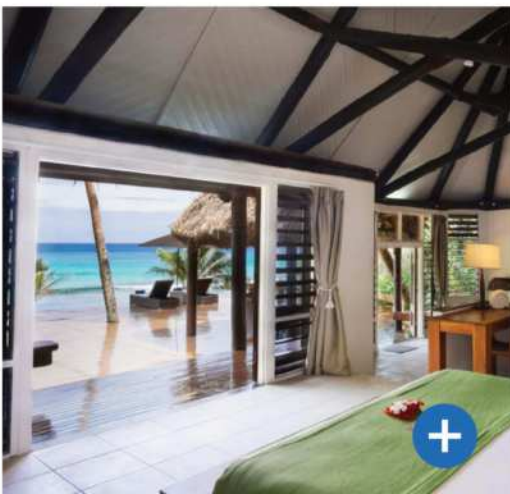


*Paradise Cove Resort 5**

Tucked away inside Naukacuvu Island's splendid shoreline, Paradise Cove offers truly special private villa accommodations steps from the champagne sands and crystal-clear waters of Yasawa. Discover three pools, two bars, restaurants, and an air-conditioned gym, and even give the kids their own escape with a teen yurt and kids' club while you indulge in customizable spa treatments and local cuisine and cocktails.

FEATURES

Restaurant | Bar | Pool | Family Friendly | AC



*Yasawa Island Resort & Spa 5**

Discover unparalleled seclusion and Fijian luxury at the 5-star Yasawa Island Resort & Spa, one of the isle's premier all meal inclusive resorts. Unwind in 18 traditionally-thatched beachfront bungalows with private cabanas, indulge in gourmet dining and drink, and experience the plethora of outdoor activities and amenities of the massive resort worry-free.

FEATURES

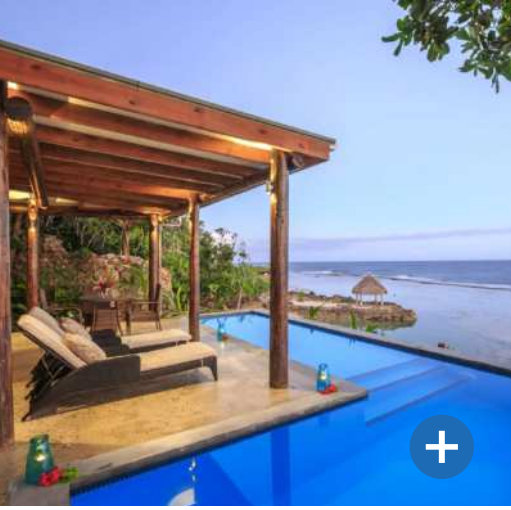
Restaurant | Bar | Pool | Romance | AC | Meal Inclusive

Savusavu

“ The hidden paradise. ”



Dubbed as 'The Hidden Paradise', Savusavu is a quaint coastal town located on the southeast side of Vanua Levu. Despite its booming tourism sector supported by high-end resort properties, Savusavu has a more off-the-beaten-track vibe compared to tourist-oriented Viti Levu. Regattas are popular here, especially during the cruising season between May and October. Nearby coral reefs offer plenty of amazing diving experiences, while the surrounding landscape provides a variety of nature-based adventure. Notable attractions include the dive sites of Namena Marine Reserve, the 250 palm species of Flora Tropica Gardens, and Waisali Rainforest Reserve.



*Savasi Island Resort 4.5**

Nestled on a 52-acre private island — dotted by giant Banyan trees and surrounded by sandy beaches, limestone outcrops, and pristine coral reefs — this boutique resort delivers the perfect ingredients for a blissful Fijian getaway. The villas, elevated for better ocean views and ventilation, feature spacious well-appointed bedrooms, shaded timber verandas, and furnishings made from local materials.

FEATURES

Restaurant | Bar | Pool | Family | Parking | Meal Inclusive

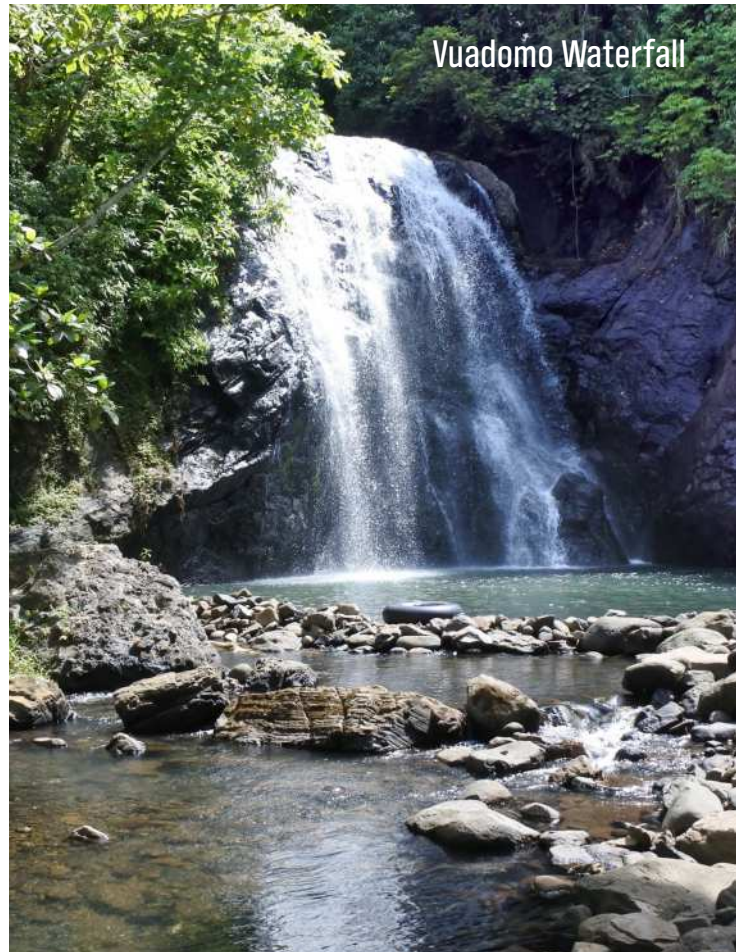


*Namale Resort & Spa 5**

With A-list clientele including well-known celebrities, it's no surprise that Namale Resort & Spa is highly regarded by the travel and hospitality community. This adult-only luxury property exudes romance and is ideal for intimate escapes. Everything about the resort is simply topnotch.

FEATURES

Restaurant | Bar | Pool | Romantic | AC | Parking
All Inclusive Resort





Avanti[®]
Destinations

COPYRIGHT © AT AVANTI DESTINATIONS, 2023